

# FFAR1 Rabbit Polyclonal Antibody



CAB16379

---

## Product Information

### Size:

20uL, 50uL, 100uL, 200uL

### Observed MW:

36kDa

### Calculated MW:

31kDa

### Applications:

WB

### Reactivity:

Human, Mouse, Rat

### Category:

Primary Antibody

## Protein Background

This gene encodes a member of the GP40 family of G protein-coupled receptors that are clustered together on chromosome 19. The encoded protein is a receptor for medium and long chain free fatty acids and may be involved in the metabolic regulation of insulin secretion. Polymorphisms in this gene may be associated with type 2 diabetes.

## Immunogen information

### Gene ID:

2864

### Uniprot

O14842

### Synonyms:

FFAR1; GPCR40; GPR40

### Immunogen:

A synthetic peptide corresponding to a sequence within amino acids 200 to the C-terminus of human FFAR1 (NP\_005294.1).

## Antibody Information

### Recommended dilutions:

**WB** 1:500 - 1:2000

### Source:

Rabbit

### Isotype:

IgG

### Purification:

Affinity purification

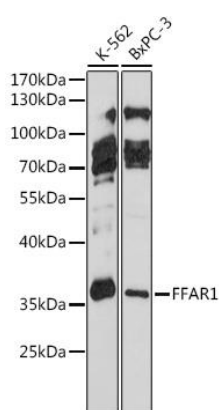
### Storage:

Store at -20°C. Avoid freeze / thaw cycles.

Buffer: PBS with 0.01% thiomersal, 50% glycerol, pH7.3.

## Product Images

---



Western blot analysis of extracts of various cell lines, using FFAR1 antibody (CAB16379) at 1:1000 dilution. Secondary antibody: HRP Goat Anti-Rabbit IgG (H+L) (CABS014) at 1:10000 dilution. Lysates/proteins: 25ug per lane. Blocking buffer: 3% nonfat dry milk in TBST. Detection: ECL Basic Kit (AbGn00020). Exposure time: 5s.