

GATA3 Rabbit Polyclonal Antibody



CAB1638

Product Information

Size:

20uL, 50uL, 100uL, 200uL

Observed MW:

48kDa

Calculated MW:

47kDa/48kDa

Applications:

WB

Reactivity:

Human, Mouse, Rat

Protein Background

This gene encodes a protein which belongs to the GATA family of transcription factors. The protein contains two GATA-type zinc fingers and is an important regulator of T-cell development and plays an important role in endothelial cell biology. Defects in this gene are the cause of hypoparathyroidism with sensorineural deafness and renal dysplasia.

Immunogen information

Gene ID:

2625

Uniprot

P23771

Synonyms:

GATA3; HDR; HDRS

Antibody Information

Recommended dilutions:

WB 1:500 - 1:2000

Source:

Rabbit

Isotype:

IgG

Purification:

Affinity purification

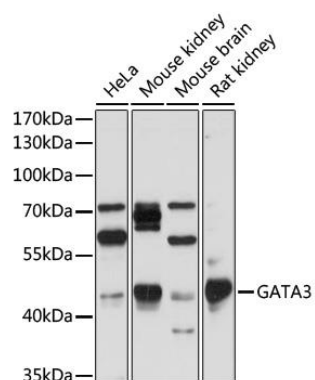
Immunogen:

Recombinant fusion protein containing a sequence corresponding to amino acids 1-260 of human GATA3 (NP_001002295.1).

Storage:

Store at -20°C. Avoid freeze / thaw cycles. Buffer: PBS with 0.02% sodium azide, 50% glycerol, pH7.3.

Product Images



Western blot analysis of extracts of various cell lines, using GATA3 antibody (CAB1638) at 1:1000 dilution. Secondary antibody: HRP Goat Anti-Rabbit IgG (H+L) (CABS014) at 1:10000 dilution. Lysates/proteins: 25ug per lane. Blocking buffer: 3% nonfat dry milk in TBST. Detection: ECL Basic Kit (CABM00020). Exposure time: 15s.