

# CXCR1 Rabbit Polyclonal Antibody



CAB16386

## Product Information

### Size:

20uL, 50uL, 100uL, 200uL

### Observed MW:

70kDa

### Calculated MW:

39kDa

### Applications:

WB IHC

### Reactivity:

Human, Mouse, Rat

## Antibody Information

### Recommended dilutions:

WB 1:500 - 1:2000 IHC 1:50  
- 1:200

### Source:

Rabbit

### Isotype:

IgG

### Purification:

Affinity purification

## Protein Background

The protein encoded by this gene is a member of the G-protein-coupled receptor family. This protein is a receptor for interleukin 8 (IL8). It binds to IL8 with high affinity, and transduces the signal through a G-protein activated second messenger system. Knockout studies in mice suggested that this protein inhibits embryonic oligodendrocyte precursor migration in developing spinal cord. This gene, IL8RB, a gene encoding another high affinity IL8 receptor, as well as IL8RBP, a pseudogene of IL8RB, form a gene cluster in a region mapped to chromosome 2q33-q36.

## Immunogen information

### Gene ID:

3577

### Uniprot

P25024

### Synonyms:

CXCR1; C-C; C-C-CKR-1; CD128; CD181; CDw128a; CKR-1;  
CMKAR1; IL8R1; IL8RA; IL8RBA

### Immunogen:

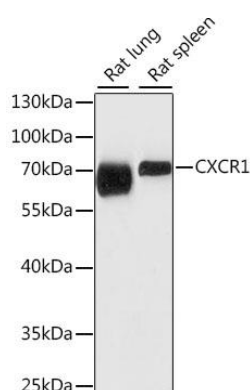
A synthetic peptide corresponding to a sequence within amino acids 250-350 of human CXCR1 (NP\_000625.1).

### Storage:

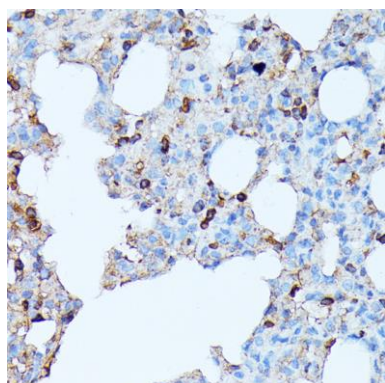
Store at -20°C. Avoid freeze / thaw cycles. Buffer: PBS with 0.02% sodium azide, 50% glycerol, pH7.3.

## Product Images

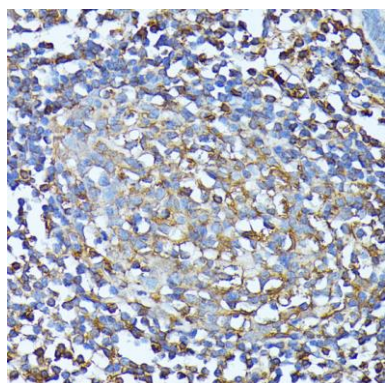
---



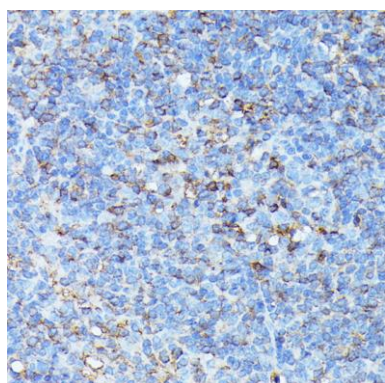
Western blot analysis of extracts of various cell lines, using CXCR1 antibody (CAB16386) at 1:1000 dilution. Secondary antibody: HRP Goat Anti-Rabbit IgG (H+L) (CABS014) at 1:10000 dilution. Lysates/proteins: 25ug per lane. Blocking buffer: 3% nonfat dry milk in TBST. Detection: ECL Basic Kit (CABM00020). Exposure time: 15s.



Immunohistochemistry of paraffin-embedded rat lung using CXCR1 antibody (CAB16386) at dilution of 1:100 (40x lens).



Immunohistochemistry of paraffin-embedded human colon using CXCR1 antibody (CAB16386) at dilution of 1:100 (40x lens).



Immunohistochemistry of paraffin-embedded mouse spleen using CXCR1 antibody (CAB16386) at dilution of 1:100 (40x lens).