

KRT13 Rabbit Polyclonal Antibody



CAB16393

Product Information

Size:

20uL, 50uL, 100uL, 200uL

Observed MW:

50kDa

Calculated MW:

38kDa/45kDa/49kDa

Applications:

WB IHC IF

Reactivity:

Human

Antibody Information

Recommended dilutions:

WB 1:500 - 1:2000 IHC 1:50
- 1:100 IF 1:50 - 1:100

Source:

Rabbit

Isotype:

IgG

Purification:

Affinity purification

Protein Background

The protein encoded by this gene is a member of the keratin gene family. The keratins are intermediate filament proteins responsible for the structural integrity of epithelial cells and are subdivided into cytokeratins and hair keratins. Most of the type I cytokeratins consist of acidic proteins which are arranged in pairs of heterotypic keratin chains. This type I cytokeratin is paired with keratin 4 and expressed in the suprabasal layers of non-cornified stratified epithelia. Mutations in this gene and keratin 4 have been associated with the autosomal dominant disorder White Sponge Nevus. The type I cytokeratins are clustered in a region of chromosome 17q21.2. Alternative splicing of this gene results in multiple transcript variants; however, not all variants have been described.

Immunogen information

Gene ID:

3860

Uniprot

P13646

Synonyms:

KRT13; CK13; K13; WSN2

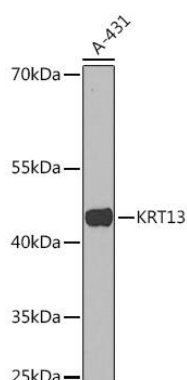
Immunogen:

Recombinant fusion protein containing a sequence corresponding to amino acids 269-458 of human KRT13 (NP_705694.2).

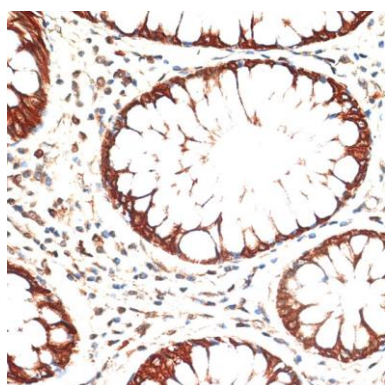
Storage:

Store at -20°C. Avoid freeze / thaw cycles. Buffer: PBS with 0.02% sodium azide, 50% glycerol, pH7.3.

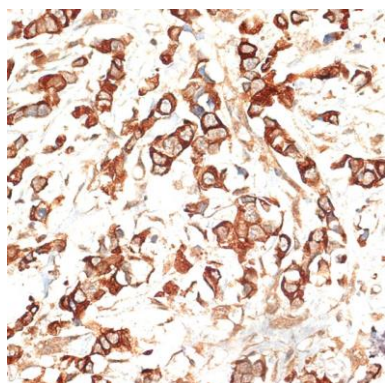
Product Images



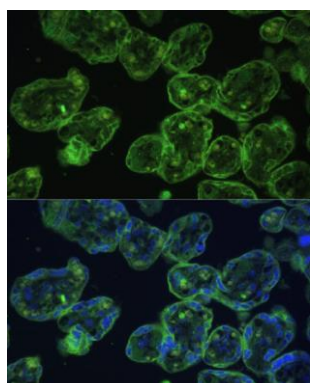
Western blot analysis of extracts of A-431 cells, using KRT13 Rabbit pAb (CAB16393) at 1:1000 dilution. Secondary antibody: HRP Goat Anti-Rabbit IgG (H+L) (CABS014) at 1:10000 dilution. Lysates/proteins: 25ug per lane. Blocking buffer: 3% nonfat dry milk in TBST. Detection: ECL Basic Kit (CABM00020). Exposure time: 90s.



Immunohistochemistry of paraffin-embedded human colon carcinoma using KRT13 antibody (CAB16393) at dilution of 1:100 (40x lens).



Immunohistochemistry of paraffin-embedded human breast cancer using KRT13 antibody (CAB16393) at dilution of 1:100 (40x lens).



Immunofluorescence analysis of human placenta using KRT13 Polyclonal Antibody (CAB16393) at dilution of 1:100 (40x lens). Blue: DAPI for nuclear staining.