

MAD2L1 Rabbit Polyclonal Antibody



CAB16395

Product Information

Size:

20uL, 50uL, 100uL, 200uL

Observed MW:

Calculated MW:

10kDa/23kDa

Applications:

IHC IF

Reactivity:

Human, Mouse, Rat

Antibody Information

Recommended dilutions:

IHC 1:50 - 1:200 IF 1:50 - 1:200

Source:

Rabbit

Isotype:

IgG

Purification:

Affinity purification

Protein Background

MAD2L1 is a component of the mitotic spindle assembly checkpoint that prevents the onset of anaphase until all chromosomes are properly aligned at the metaphase plate. MAD2L1 is related to the MAD2L2 gene located on chromosome 1. A MAD2 pseudogene has been mapped to chromosome 14.

Immunogen information

Gene ID:

4085

Uniprot

Q13257

Synonyms:

MAD2L1; HSMAD2; MAD2

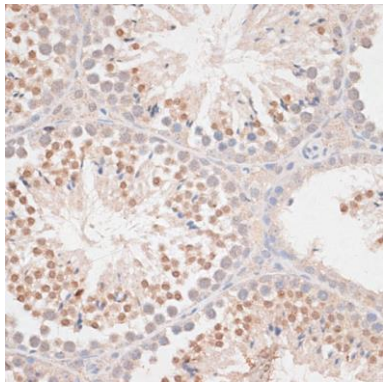
Immunogen:

Recombinant fusion protein containing a sequence corresponding to amino acids 1-205 of human MAD2L1 (NP_002349.1).

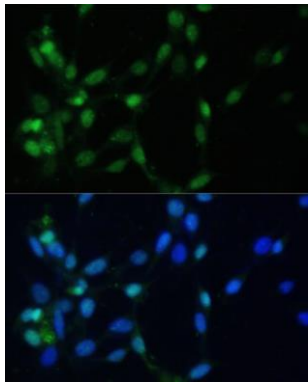
Storage:

Store at -20°C. Avoid freeze / thaw cycles. Buffer: PBS with 0.02% sodium azide, 50% glycerol, pH7.3.

Product Images



Immunohistochemistry of paraffin-embedded mouse testis using MAD2L1 antibody (CAB16395) at dilution of 1:100 (40x lens).



Immunofluorescence analysis of NIH-3T3 cells using MAD2L1 Polyclonal Antibody (CAB16395) at dilution of 1:100 (40x lens). Blue: DAPI for nuclear staining.