

MGST1 Rabbit Polyclonal Antibody



CAB16399

Product Information

Size:

20uL, 50uL, 100uL, 200uL

Observed MW:

18kDa

Calculated MW:

9kDa/17kDa

Applications:

WB IF

Reactivity:

Human, Mouse, Rat

Antibody Information

Recommended dilutions:

WB 1:500 - 1:2000 IF 1:50 - 1:100

Source:

Rabbit

Isotype:

IgG

Purification:

Affinity purification

Protein Background

The MAPEG (Membrane Associated Proteins in Eicosanoid and Glutathione metabolism) family consists of six human proteins, two of which are involved in the production of leukotrienes and prostaglandin E, important mediators of inflammation. Other family members, demonstrating glutathione S-transferase and peroxidase activities, are involved in cellular defense against toxic, carcinogenic, and pharmacologically active electrophilic compounds. This gene encodes a protein that catalyzes the conjugation of glutathione to electrophiles and the reduction of lipid hydroperoxides. This protein is localized to the endoplasmic reticulum and outer mitochondrial membrane where it is thought to protect these membranes from oxidative stress. Several transcript variants, some non-protein coding and some protein coding, have been found for this gene.

Immunogen information

Gene ID:

4257

Uniprot

P10620

Synonyms:

MGST1; GST12; MGST; MGST-I

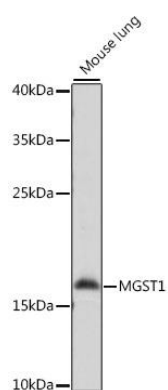
Immunogen:

A synthetic peptide corresponding to a sequence within amino acids 1-100 of human MGST1 (NP_001247440.1).

Storage:

Store at -20°C. Avoid freeze / thaw cycles. Buffer: PBS with 0.02% sodium azide, 50% glycerol, pH7.3.

Product Images



Western blot analysis of extracts of mouse lung, using MGST1 antibody (CAB16399) at 1:1000 dilution. Secondary antibody: HRP Goat Anti-Rabbit IgG (H+L) (CABS014) at 1:10000 dilution. Lysates/proteins: 25ug per lane. Blocking buffer: 3% nonfat dry milk in TBST. Detection: ECL Basic Kit (CABM00020). Exposure time: 20s.