

CAMP Rabbit Polyclonal Antibody



CAB1640

Product Information

Size:

20uL, 50uL, 100uL, 200uL

Observed MW:

19kDa

Calculated MW:

19kDa

Applications:

WB IHC IF

Reactivity:

Human, Mouse

Protein Background

This gene encodes a member of an antimicrobial peptide family, characterized by a highly conserved N-terminal signal peptide containing a cathelin domain and a structurally variable cationic antimicrobial peptide, which is produced by extracellular proteolysis from the C-terminus. In addition to its antibacterial, antifungal, and antiviral activities, the encoded protein functions in cell chemotaxis, immune mediator induction, and inflammatory response regulation.

Immunogen information

Gene ID:

820

Uniprot

P49913

Synonyms:

CAMP; CAP-18; CAP18; CRAMP; FALL-39; FALL39; HSD26; LL37

Antibody Information

Recommended dilutions:

WB 1:500 - 1:2000 IHC 1:50
- 1:200 IF 1:50 - 1:200

Source:

Rabbit

Isotype:

IgG

Purification:

Affinity purification

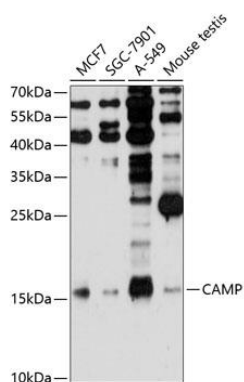
Immunogen:

Recombinant fusion protein containing a sequence corresponding to amino acids 31-170 of human CAMP (NP_004336.3).

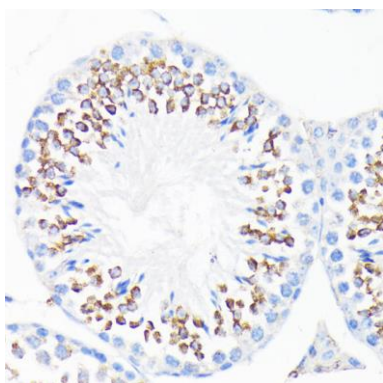
Storage:

Store at -20°C. Avoid freeze / thaw cycles. Buffer: PBS with 0.02% sodium azide, 50% glycerol, pH7.3.

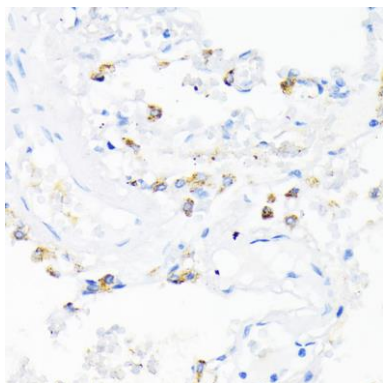
Product Images



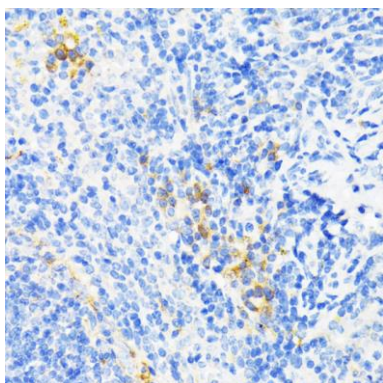
Western blot analysis of extracts of various cell lines, using CAMP Antibody (CAB1640) at 1:1000 dilution. Secondary antibody: HRP Goat Anti-Rabbit IgG (H+L) (CABS014) at 1:10000 dilution. Lysates/proteins: 25ug per lane. Blocking buffer: 3% nonfat dry milk in TBST. Detection: ECL Basic Kit (CABM00020). Exposure time: 60s.



Immunohistochemistry of paraffin-embedded mouse testis using CAMP antibody (CAB1640) at dilution of 1:200 (40x lens).



Immunohistochemistry of paraffin-embedded human lung using CAMP antibody (CAB1640) at dilution of 1:200 (40x lens).



Immunohistochemistry of paraffin-embedded mouse spleen using CAMP antibody (CAB1640) at dilution of 1:200 (40x lens).