

NINJ1 Rabbit Polyclonal Antibody



CAB16406

Product Information

Size:

20uL, 50uL, 100uL, 200uL

Observed MW:

16kDa

Calculated MW:

16kDa

Applications:

WB

Reactivity:

Mouse, Rat

Protein Background

The ninjurin protein is upregulated after nerve injury both in dorsal root ganglion neurons and in Schwann cells. It demonstrates properties of a homophilic adhesion molecule and promotes neurite outgrowth from primary cultured dorsal root ganglion neurons.

Immunogen information

Gene ID:

4814

Uniprot

Q92982

Synonyms:

NINJ1; NIN1; NINJURIN

Antibody Information

Recommended dilutions:

WB 1:500 - 1:2000

Source:

Rabbit

Isotype:

IgG

Purification:

Affinity purification

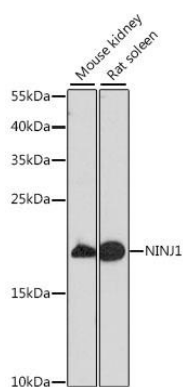
Immunogen:

A synthetic peptide corresponding to a sequence within amino acids 1-100 of human NINJ1 (NP_004139.2).

Storage:

Store at -20°C. Avoid freeze / thaw cycles. Buffer: PBS with 0.02% sodium azide, 50% glycerol, pH7.3.

Product Images



Western blot analysis of extracts of various cell lines, using NINJ1 antibody (CAB16406) at 1:1000 dilution. Secondary antibody: HRP Goat Anti-Rabbit IgG (H+L) (CABS014) at 1:10000 dilution. Lysates/proteins: 25ug per lane. Blocking buffer: 3% nonfat dry milk in TBST. Detection: ECL Basic Kit (CABM00020). Exposure time: 10s.