

NIT1 Rabbit Polyclonal Antibody



CAB16407

Product Information

Size:

20uL, 50uL, 100uL, 200uL

Observed MW:

34kDa

Calculated MW:

26kDa/31kDa/34kDa/35kDa/
40kDa

Applications:

WB

Reactivity:

Rat

Protein Background

This gene encodes a member of the nitrilase protein family with homology to bacterial and plant nitrilases, enzymes that cleave nitriles and organic amides to the corresponding carboxylic acids plus ammonia. Multiple transcript variants encoding different isoforms have been found for this gene.

Immunogen information

Gene ID:

4817

Uniprot

Q86X76

Synonyms:

NIT1

Antibody Information

Recommended dilutions:

WB 1:500 - 1:2000

Source:

Rabbit

Isotype:

IgG

Purification:

Affinity purification

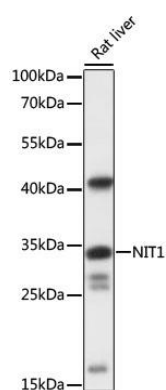
Immunogen:

Recombinant fusion protein containing a sequence corresponding to amino acids 1-150 of human NIT1 (NP_001172021.1).

Storage:

Store at -20°C. Avoid freeze / thaw cycles. Buffer: PBS with 0.02% sodium azide, 50% glycerol, pH7.3.

Product Images



Western blot analysis of extracts of rat liver, using NIT1 antibody (CAB16407) at 1:1000 dilution. Secondary antibody: HRP Goat Anti-Rabbit IgG (H+L) (CABS014) at 1:10000 dilution. Lysates/proteins: 25ug per lane. Blocking buffer: 3% nonfat dry milk in TBST. Detection: ECL Basic Kit (CABM00020). Exposure time: 1s.