

PI4KB Rabbit Polyclonal Antibody



CAB16416

Product Information

Size:

20uL, 50uL, 100uL, 200uL

Observed MW:

91kDa

Calculated MW:

54kDa/89kDa/91kDa

Applications:

WB IF

Reactivity:

Mouse, Rat

Antibody Information

Recommended dilutions:

WB 1:500 - 1:2000 IF 1:50 - 1:200

Source:

Rabbit

Isotype:

IgG

Purification:

Affinity purification

Protein Background

Immunogen information

Gene ID:

5298

Uniprot

Q9UBF8

Synonyms:

PI4KB; NPIK; PI4K-BETA; PI4K92; PI4KBETA; PI4KIIIBETA; PIK4CB

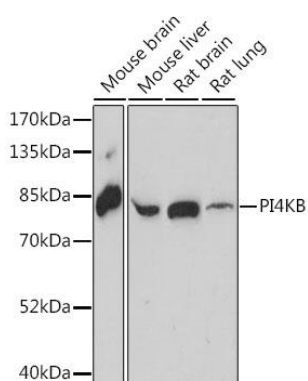
Immunogen:

Recombinant fusion protein containing a sequence corresponding to amino acids 560-801 of human PI4KB (NP_001185702).

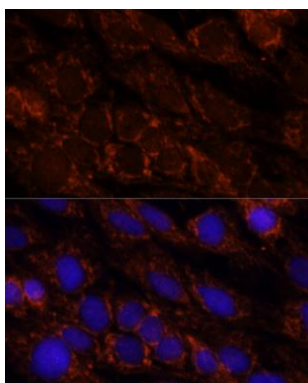
Storage:

Store at -20°C. Avoid freeze / thaw cycles. Buffer: PBS with 0.02% sodium azide, 50% glycerol, pH7.3.

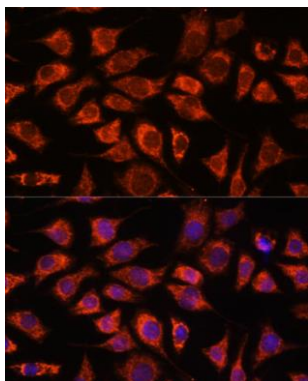
Product Images



Western blot analysis of extracts of various cell lines, using PI4KB antibody (CAB16416) at 1:1000 dilution. Secondary antibody: HRP Goat Anti-Rabbit IgG (H+L) (CABS014) at 1:10000 dilution. Lysates/proteins: 25ug per lane. Blocking buffer: 3% nonfat dry milk in TBST. Detection: ECL Basic Kit (CABM00020). Exposure time: 90s.



Immunofluorescence analysis of C6 cells using PI4KB antibody (CAB16416) at dilution of 1:100. Blue: DAPI for nuclear staining.



Immunofluorescence analysis of L929 cells using PI4KB antibody (CAB16416) at dilution of 1:100. Blue: DAPI for nuclear staining.