

RTN1 Rabbit Polyclonal Antibody



CAB16427

Product Information

Size:

20uL, 50uL, 100uL, 200uL

Observed MW:

24kDa

Calculated MW:

23kDa/38kDa/83kDa

Applications:

WB

Reactivity:

Mouse

Protein Background

This gene belongs to the family of reticulon encoding genes. Reticulons are associated with the endoplasmic reticulum, and are involved in neuroendocrine secretion or in membrane trafficking in neuroendocrine cells. This gene is considered to be a specific marker for neurological diseases and cancer, and is a potential molecular target for therapy. Alternative splicing results in multiple transcript variants.

Immunogen information

Gene ID:

6252

Uniprot

Q16799

Synonyms:

RTN1; NSP

Antibody Information

Recommended dilutions:

WB 1:500 - 1:2000

Source:

Rabbit

Isotype:

IgG

Purification:

Affinity purification

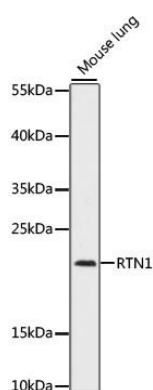
Immunogen:

Recombinant fusion protein containing a sequence corresponding to amino acids 80-340 of human RTN1 (NP_066959.1).

Storage:

Store at -20°C. Avoid freeze / thaw cycles. Buffer: PBS with 0.02% sodium azide, 50% glycerol, pH7.3.

Product Images



Western blot analysis of extracts of mouse lung, using RTN1 antibody (CAB16427) at 1:1000 dilution. Secondary antibody: HRP Goat Anti-Rabbit IgG (H+L) (CABS014) at 1:10000 dilution. Lysates/proteins: 25ug per lane. Blocking buffer: 3% nonfat dry milk in TBST. Detection: ECL Enhanced Kit (CABM00021). Exposure time: 5 min.