

# SAA4 Rabbit Polyclonal Antibody



CAB16428

---

## Product Information

### Size:

20uL, 50uL, 100uL, 200uL

### Observed MW:

14kDa

### Calculated MW:

14kDa

### Applications:

WB IHC

### Reactivity:

Human, Mouse, Rat

## Antibody Information

### Recommended dilutions:

WB 1:500 - 1:2000 IHC 1:50  
- 1:200

### Source:

Rabbit

### Isotype:

IgG

### Purification:

Affinity purification

## Protein Background

### Immunogen information

#### Gene ID:

6291

#### Uniprot

P35542

#### Synonyms:

SAA4; C-SAA; CSAA

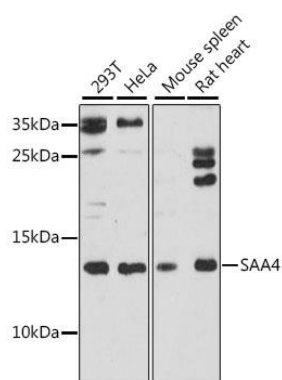
#### Immunogen:

A synthetic peptide corresponding to a sequence within amino acids 50 to the C-terminus of human SAA4 (NP\_006503.2).

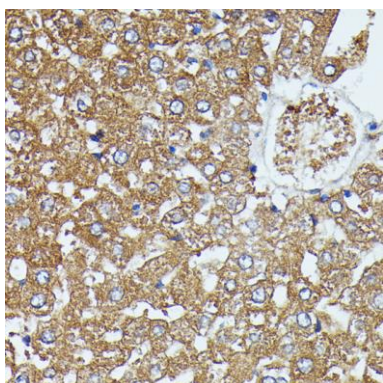
#### Storage:

Store at -20°C. Avoid freeze / thaw cycles. Buffer: PBS with 0.02% sodium azide, 50% glycerol, pH7.3.

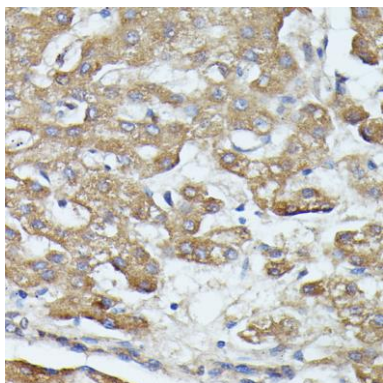
## Product Images



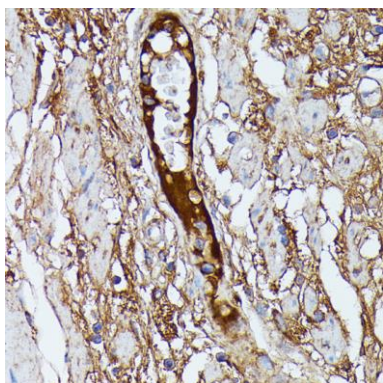
Western blot analysis of extracts of various cell lines, using SAA4 antibody (CAB16428) at 1:1000 dilution. Secondary antibody: HRP Goat Anti-Rabbit IgG (H+L) (CABS014) at 1:10000 dilution. Lysates/proteins: 25ug per lane. Blocking buffer: 3% nonfat dry milk in TBST. Detection: ECL Basic Kit (CABM00020). Exposure time: 90s.



Immunohistochemistry of paraffin-embedded rat liver using SAA4 antibody (CAB16428) at dilution of 1:100 (40x lens).



Immunohistochemistry of paraffin-embedded human liver cancer using SAA4 antibody (CAB16428) at dilution of 1:100 (40x lens).



Immunohistochemistry of paraffin-embedded human plasma using SAA4 antibody (CAB16428) at dilution of 1:100 (40x lens).