

# [KO Validated] SCD Rabbit Polyclonal Antibody



CAB16429

## Product Information

### Size:

20uL, 50uL, 100uL, 200uL

### Observed MW:

37KDa

### Calculated MW:

41kDa

### Applications:

WB IHC IF

### Reactivity:

Human, Mouse, Rat

## Protein Background

This gene encodes an enzyme involved in fatty acid biosynthesis, primarily the synthesis of oleic acid. The protein belongs to the fatty acid desaturase family and is an integral membrane protein located in the endoplasmic reticulum. Transcripts of approximately 3.9 and 5.2 kb, differing only by alternative polyadenylation signals, have been detected. A gene encoding a similar enzyme is located on chromosome 4 and a pseudogene of this gene is located on chromosome 17.

## Immunogen information

### Gene ID:

6319

### Uniprot

O00767

### Synonyms:

SCD; FADS5; MSTP008; SCD1; SCDOS; hSCD1

## Antibody Information

### Recommended dilutions:

WB 1:500 - 1:2000 IHC 1:50  
- 1:100 IF 1:50 - 1:100

### Source:

Rabbit

### Isotype:

IgG

### Purification:

Affinity purification

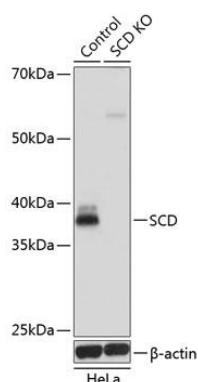
### Immunogen:

A synthetic peptide corresponding to a sequence within amino acids 200 to the C-terminus of human SCD (NP\_005054.3).

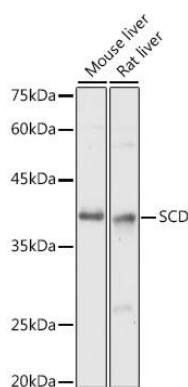
### Storage:

Store at -20°C. Avoid freeze / thaw cycles. Buffer: PBS with 0.02% sodium azide, 50% glycerol, pH7.3.

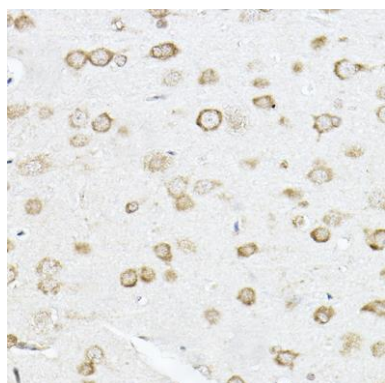
## Product Images



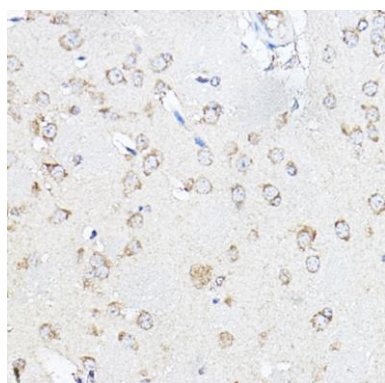
Western blot analysis of extracts from normal (control) and SCD knockout (KO) HeLa cells, using SCD antibody (CAB16429) at 1:1000 dilution. Secondary antibody: HRP Goat Anti-Rabbit IgG (H+L) (CABS014) at 1:10000 dilution. Lysates/proteins: 25ug per lane. Blocking buffer: 3% nonfat dry milk in TBST. Detection: ECL Basic Kit (CABM00020). Exposure time: 1s.



Western blot analysis of extracts of various cell lines, using SCD antibody (CAB16429) at 1:1000 dilution. Secondary antibody: HRP Goat Anti-Rabbit IgG (H+L) (CABS014) at 1:10000 dilution. Lysates/proteins: 25ug per lane. Blocking buffer: 3% nonfat dry milk in TBST. Detection: ECL Basic Kit (CABM00020). Exposure time: 1s.



Immunohistochemistry of paraffin-embedded rat brain using [KO Validated] SCD Rabbit pAb (CAB16429) at dilution of 1:100 (40x lens).



Immunohistochemistry of paraffin-embedded mouse brain using [KO Validated] SCD Rabbit pAb (CAB16429) at dilution of 1:100 (40x lens).