

SP4 Rabbit Polyclonal Antibody



CAB16431

Product Information

Size:

20uL, 50uL, 100uL, 200uL

Observed MW:

82kDa

Calculated MW:

81kDa

Applications:

WB IHC

Reactivity:

Human, Mouse, Rat

Protein Background

The protein encoded by this gene is a transcription factor that can bind to the GC promoter region of a variety of genes, including those of the photoreceptor signal transduction system. The encoded protein binds to the same sites in promoter CpG islands as does the transcription factor SP1, although its expression is much more restricted compared to that of SP1. This gene may be involved in bipolar disorder and schizophrenia.

Immunogen information

Gene ID:

6671

Uniprot

Q02446

Synonyms:

SP4; HF1B; SPR-1

Antibody Information

Recommended dilutions:

WB 1:500 - 1:2000 IHC

1:100 - 1:200

Source:

Rabbit

Isotype:

IgG

Purification:

Affinity purification

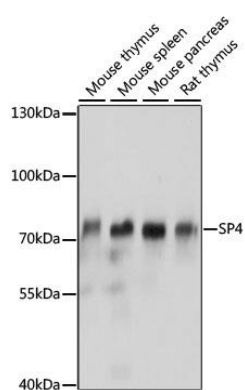
Immunogen:

Recombinant fusion protein containing a sequence corresponding to amino acids 280-440 of human SP4 (NP_003103.2).

Storage:

Store at -20°C. Avoid freeze / thaw cycles. Buffer: PBS with 0.02% sodium azide, 50% glycerol, pH7.3.

Product Images



Western blot analysis of extracts of various cell lines, using SP4 antibody (CAB16431) at 1:1000 dilution. Secondary antibody: HRP Goat Anti-Rabbit IgG (H+L) (CABS014) at 1:10000 dilution. Lysates/proteins: 25ug per lane. Blocking buffer: 3% nonfat dry milk in TBST. Detection: ECL Basic Kit (CABM00020). Exposure time: 1s.