

# NEK4 Rabbit Polyclonal Antibody



CAB16433

## Product Information

### Size:

20uL, 50uL, 100uL, 200uL

### Observed MW:

95kDa

### Calculated MW:

84kDa/88kDa/94kDa

### Applications:

WB

### Reactivity:

Mouse, Rat

## Protein Background

The protein encoded by this gene is a serine/threonine protein kinase required for normal entry into replicative senescence. The encoded protein also is involved in cell cycle arrest in response to double-stranded DNA damage. Finally, this protein plays a role in maintaining cilium integrity, and defects in this gene have been associated with ciliopathies.

## Immunogen information

### Gene ID:

6787

### Uniprot

P51957

### Synonyms:

NEK4; NRK2; STK2; pp12301

## Antibody Information

### Recommended dilutions:

WB 1:500 - 1:2000

### Source:

Rabbit

### Isotype:

IgG

### Purification:

Affinity purification

### Immunogen:

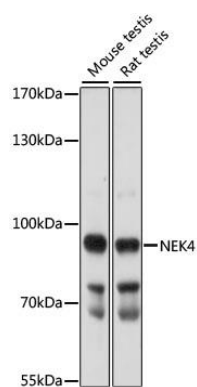
Recombinant fusion protein containing a sequence corresponding to amino acids 1-300 of human NEK4 (NP\_003148.2).

### Storage:

Store at -20°C. Avoid freeze / thaw cycles. Buffer: PBS with 0.02% sodium azide, 50% glycerol, pH7.3.

## Product Images

---



Western blot analysis of extracts of various cell lines, using NEK4 antibody (CAB16433) at 1:1000 dilution. Secondary antibody: HRP Goat Anti-Rabbit IgG (H+L) (CABS014) at 1:10000 dilution. Lysates/proteins: 25ug per lane. Blocking buffer: 3% nonfat dry milk in TBST. Detection: ECL Basic Kit (CABM00020). Exposure time: 15s.