

SUPT6H Rabbit Polyclonal Antibody



CAB16434

Product Information

Size:

20uL, 50uL, 100uL, 200uL

Observed MW:

260kDa

Calculated MW:

61kDa/84kDa/199kDa

Applications:

WB IHC IF

Reactivity:

Human, Mouse, Rat

Antibody Information

Recommended dilutions:

WB 1:500 - 1:2000 IHC

1:100 - 1:200 IF 1:50 -

1:200

Source:

Rabbit

Isotype:

IgG

Purification:

Affinity purification

Protein Background

Immunogen information

Gene ID:

6830

Uniprot

Q7KZ85

Synonyms:

SUPT6H; SPT6; SPT6H; emb-5; SPT6 homolog

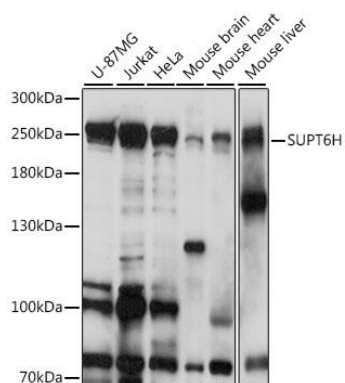
Immunogen:

Recombinant fusion protein containing a sequence corresponding to amino acids 1500-1726 of human SUPT6H (NP_003161.2).

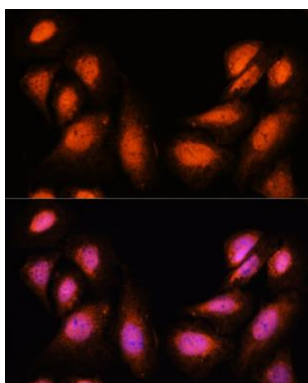
Storage:

Store at -20°C. Avoid freeze / thaw cycles. Buffer: PBS with 0.02% sodium azide, 50% glycerol, pH7.3.

Product Images



Western blot analysis of extracts of various cell lines, using SUPT6H antibody (CAB16434) at 1:1000 dilution. Secondary antibody: HRP Goat Anti-Rabbit IgG (H+L) (CABS014) at 1:10000 dilution. Lysates/proteins: 25ug per lane. Blocking buffer: 3% nonfat dry milk in TBST. Detection: ECL Basic Kit (CABM00020). Exposure time: 10s.



Immunofluorescence analysis of U-2 OS cells using SUPT6H antibody (CAB16434) at dilution of 1:100. Blue: DAPI for nuclear staining.