

# THBS4 Rabbit Polyclonal Antibody



CAB16438

## Product Information

### Size:

20uL, 50uL, 100uL, 200uL

### Observed MW:

106kDa

### Calculated MW:

105kDa

### Applications:

WB

### Reactivity:

Human, Mouse

## Antibody Information

### Recommended dilutions:

WB 1:500 - 1:2000

### Source:

Rabbit

### Isotype:

IgG

### Purification:

Affinity purification

## Protein Background

The protein encoded by this gene belongs to the thrombospondin protein family. Thrombospondin family members are adhesive glycoproteins that mediate cell-to-cell and cell-to-matrix interactions. This protein forms a pentamer and can bind to heparin and calcium. It is involved in local signaling in the developing and adult nervous system, and it contributes to spinal sensitization and neuropathic pain states. This gene is activated during the stromal response to invasive breast cancer. It may also play a role in inflammatory responses in Alzheimer's disease. Alternative splicing results in multiple transcript variants.

## Immunogen information

### Gene ID:

7060

### Uniprot

P35443

### Synonyms:

THBS4; TSP-4; TSP4

### Immunogen:

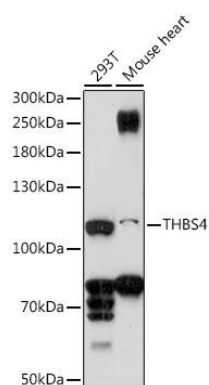
Recombinant fusion protein containing a sequence corresponding to amino acids 27-300 of human THBS4 (NP\_003239.2).

### Storage:

Store at -20°C. Avoid freeze / thaw cycles. Buffer: PBS with 0.02% sodium azide, 50% glycerol, pH7.3.

## Product Images

---



Western blot analysis of extracts of various cell lines, using THBS4 antibody (CAB16438) at 1:1000 dilution. Secondary antibody: HRP Goat Anti-Rabbit IgG (H+L) (CABS014) at 1:10000 dilution. Lysates/proteins: 25ug per lane. Blocking buffer: 3% nonfat dry milk in TBST. Detection: ECL Enhanced Kit (CABM00021). Exposure time: 150s.