

CD11A Rabbit Polyclonal Antibody



CAB1644

Product Information

Size:

20uL, 50uL, 100uL, 200uL

Observed MW:

175kDa

Calculated MW:

119kDa/128kDa/134kDa

Applications:

WB IHC IF

Reactivity:

Human, Mouse, Rat

Protein Background

ITGAL encodes the integrin alpha L chain. Integrins are heterodimeric integral membrane proteins composed of an alpha chain and a beta chain. This I-domain containing alpha integrin combines with the beta 2 chain (ITGB2) to form the integrin lymphocyte function-associated antigen-1 (LFA-1), which is expressed on all leukocytes. LFA-1 plays a central role in leukocyte intercellular adhesion through interactions with its ligands, ICAMs 1-3 (intercellular adhesion molecules 1 through 3), and also functions in lymphocyte costimulatory signaling. Two transcript variants encoding different isoforms have been found for this gene.

Immunogen information

Gene ID:

3683

Uniprot

P20701

Synonyms:

CD11A; LFA-1; LFA1A; CD11a; ITGAL

Antibody Information

Recommended dilutions:

WB 1:500 - 1:2000 IHC 1:50
- 1:100 IF 1:50 - 1:100

Source:

Rabbit

Isotype:

IgG

Purification:

Affinity purification

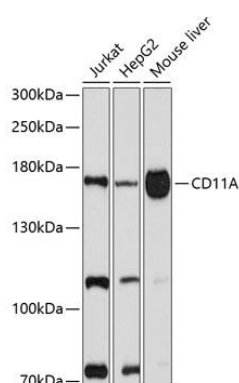
Immunogen:

Recombinant fusion protein containing a sequence corresponding to amino acids 26-306 of human CD11A (NP_001107852.1).

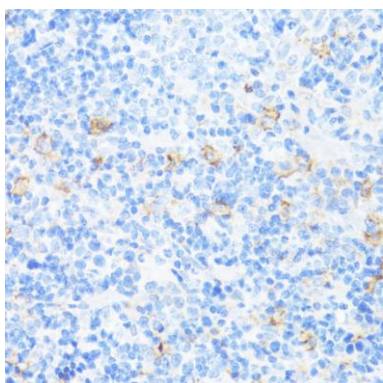
Storage:

Store at -20°C. Avoid freeze / thaw cycles. Buffer: PBS with 0.02% sodium azide, 50% glycerol, pH7.3.

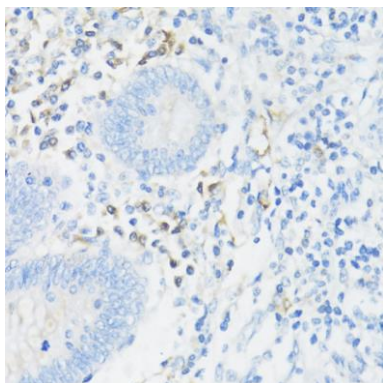
Product Images



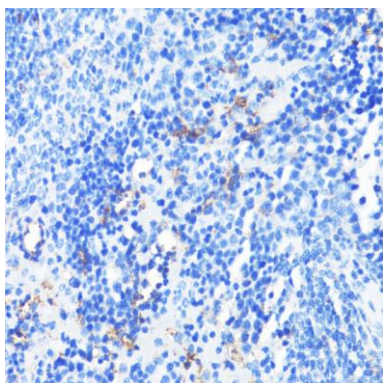
Western blot analysis of extracts of various cell lines, using CD11A antibody (CAB1644) at 1:1000 dilution. Secondary antibody: HRP Goat Anti-Rabbit IgG (H+L) (CABS014) at 1:10000 dilution. Lysates/proteins: 25ug per lane. Blocking buffer: 3% nonfat dry milk in TBST. Detection: ECL Basic Kit (CABM00020). Exposure time: 60s.



Immunohistochemistry of paraffin-embedded rat spleen using CD11A antibody (CAB1644) at dilution of 1:100 (40x lens).



Immunohistochemistry of paraffin-embedded human appendix using CD11A antibody (CAB1644) at dilution of 1:100 (40x lens).



Immunohistochemistry of paraffin-embedded mouse spleen using CD11A antibody (CAB1644) at dilution of 1:100 (40x lens).