

# ZNF189 Rabbit Polyclonal Antibody



CAB16446

---

## Product Information

### Size:

20uL, 50uL, 100uL, 200uL

### Observed MW:

73kDa

### Calculated MW:

62kDa/68kDa/71kDa/72kDa

### Applications:

WB

### Reactivity:

Human

## Protein Background

Kruppel-like zinc finger proteins such as ZNF189 contain a conserved stretch of 7 amino acids that connects a variable number of DNA-binding zinc finger repeats of the cys(2)his(2) (C2H2) type. Approximately 30% of human Kruppel-like zinc finger proteins contain an N-terminal Kruppel-associated box (KRAB) domain. The KRAB domain consists of approximately 75 amino acids that may be subdivided into an A box, which is present in every KRAB domain and is essential for transcriptional repression, and a B box, which is not always present.

## Immunogen information

### Gene ID:

7743

### Uniprot

O75820

### Synonyms:

ZNF189

## Antibody Information

### Recommended dilutions:

WB 1:500 - 1:2000

### Source:

Rabbit

### Isotype:

IgG

### Purification:

Affinity purification

### Immunogen:

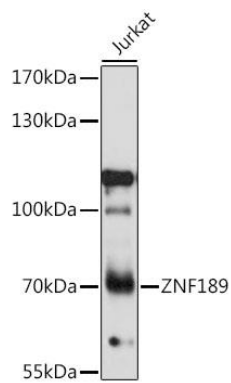
Recombinant fusion protein containing a sequence corresponding to amino acids 1-150 of human ZNF189 (NP\_001265160.1).

### Storage:

Store at -20°C. Avoid freeze / thaw cycles. Buffer: PBS with 0.02% sodium azide, 50% glycerol, pH7.3.

## Product Images

---



Western blot analysis of extracts of Jurkat cells, using ZNF189 antibody (CAB16446) at 1:1000 dilution. Secondary antibody: HRP Goat Anti-Rabbit IgG (H+L) (CABS014) at 1:10000 dilution. Lysates/proteins: 25ug per lane. Blocking buffer: 3% nonfat dry milk in TBST. Detection: ECL Basic Kit (CABM00020). Exposure time: 10s.