

EPX Rabbit Polyclonal Antibody



CAB16450

Product Information

Size:

20uL, 50uL, 100uL, 200uL

Observed MW:

81kDa

Calculated MW:

81kDa

Applications:

WB

Reactivity:

Human

Protein Background

This gene is a member of the peroxidase gene family and is expressed in eosinophils. The encoded preproprotein is proteolytically processed into covalently attached heavy and light chains to form the mature enzyme, which functions as an oxidant. The enzyme is released at sites of parasitic infection or allergen stimulation to mediate lysis of protozoa or parasitic worms. The gene is found in a gene cluster with other peroxidase genes on chromosome 17. Mutations in this gene result in eosinophil peroxidase deficiency.

Immunogen information

Gene ID:

8288

Uniprot

P11678

Synonyms:

EPX; EPO; EPP; EPX-PEN; EPXD

Antibody Information

Recommended dilutions:

WB 1:500 - 1:2000

Source:

Rabbit

Isotype:

IgG

Purification:

Affinity purification

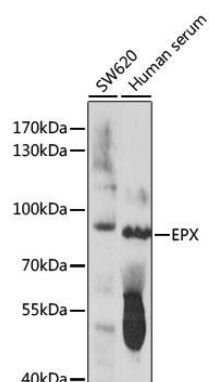
Immunogen:

A synthetic peptide corresponding to a sequence within amino acids 400-500 of human EPX (NP_000493.1).

Storage:

Store at -20°C. Avoid freeze / thaw cycles. Buffer: PBS with 0.02% sodium azide, 50% glycerol, pH7.3.

Product Images



Western blot analysis of extracts of various cell lines, using EPX antibody (CAB16450) at 1:1000 dilution. Secondary antibody: HRP Goat Anti-Rabbit IgG (H+L) (CABS014) at 1:10000 dilution. Lysates/proteins: 25ug per lane. Blocking buffer: 3% nonfat dry milk in TBST. Detection: ECL Basic Kit (CABM00020). Exposure time: 30s.