

BRAP Rabbit Polyclonal Antibody



CAB16451

Product Information

Size:

20uL, 50uL, 100uL, 200uL

Observed MW:

72kDa

Calculated MW:

47kDa/67kDa

Applications:

WB IHC IF

Reactivity:

Human, Mouse, Rat

Protein Background

The protein encoded by this gene was identified by its ability to bind to the nuclear localization signal of BRCA1 and other proteins. It is a cytoplasmic protein which may regulate nuclear targeting by retaining proteins with a nuclear localization signal in the cytoplasm.

Immunogen information

Gene ID:

8315

Uniprot

Q7Z569

Synonyms:

BRAP; BRAP2; IMP; RNF52

Antibody Information

Recommended dilutions:

WB 1:500 - 1:2000 IHC 1:50
- 1:100 IF 1:50 - 1:100

Source:

Rabbit

Isotype:

IgG

Purification:

Affinity purification

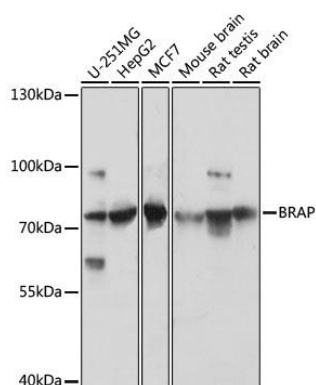
Immunogen:

Recombinant fusion protein containing a sequence corresponding to amino acids 1-200 of human BRAP (NP_006759.3).

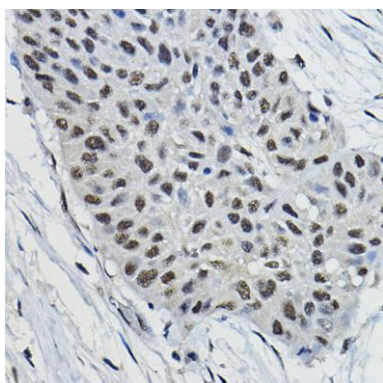
Storage:

Store at -20°C. Avoid freeze / thaw cycles. Buffer: PBS with 0.02% sodium azide, 50% glycerol, pH7.3.

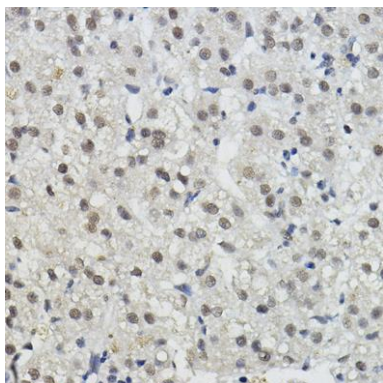
Product Images



Western blot analysis of extracts of various cell lines, using BRAP antibody (CAB16451) at 1:3000 dilution. Secondary antibody: HRP Goat Anti-Rabbit IgG (H+L) (CABS014) at 1:10000 dilution. Lysates/proteins: 25ug per lane. Blocking buffer: 3% nonfat dry milk in TBST. Detection: ECL Basic Kit (CABM00020). Exposure time: 10s.



Immunohistochemistry of paraffin-embedded human lung cancer using BRAP Rabbit pAb (CAB16451) at dilution of 1:100 (40x lens).



Immunohistochemistry of paraffin-embedded human liver cancer using BRAP Rabbit pAb (CAB16451) at dilution of 1:100 (40x lens).