

CUL3 Rabbit Polyclonal Antibody



CAB16455

Product Information

Size:

20uL, 50uL, 100uL, 200uL

Observed MW:

82kDa, 84kDa

Calculated MW:

81kDa/86kDa/88kDa

Applications:

WB IHC IF

Reactivity:

Human, Mouse, Rat

Protein Background

This gene encodes a member of the cullin protein family. The encoded protein plays a critical role in the polyubiquitination and subsequent degradation of specific protein substrates as the core component and scaffold protein of an E3 ubiquitin ligase complex. Complexes including the encoded protein may also play a role in late endosome maturation. Mutations in this gene are a cause of type 2E pseudohypoaldosteronism. Alternatively spliced transcript variants encoding multiple isoforms have been observed for this gene.

Immunogen information

Gene ID:

8452

Uniprot

Q13618

Synonyms:

CUL-3; PHA2E; CUL3; Cullin 3; cullin-3

Antibody Information

Recommended dilutions:

WB 1:500 - 1:2000 IHC 1:50
- 1:200 IF 1:50 - 1:200

Source:

Rabbit

Isotype:

IgG

Purification:

Affinity purification

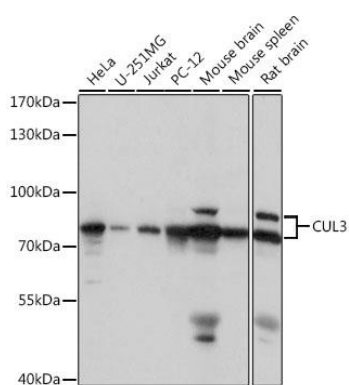
Immunogen:

Recombinant protein of human CUL3

Storage:

Store at -20°C. Avoid freeze / thaw cycles. Buffer: PBS with 0.02% sodium azide, 50% glycerol, pH7.3.

Product Images



Western blot analysis of extracts of various cell lines, using CUL3 antibody (CAB16455) at 1:1000 dilution. Secondary antibody: HRP Goat Anti-Rabbit IgG (H+L) (CABS014) at 1:10000 dilution. Lysates/proteins: 25ug per lane. Blocking buffer: 3% nonfat dry milk in TBST. Detection: ECL Basic Kit (CABM00020). Exposure time: 1s.