

# INPP4B Rabbit Polyclonal Antibody



CAB16461

## Product Information

### Size:

20uL, 50uL, 100uL, 200uL

### Observed MW:

98kDa

### Calculated MW:

14kDa/104kDa

### Applications:

WB

### Reactivity:

Human, Mouse, Rat

## Protein Background

INPP4B encodes the inositol polyphosphate 4-phosphatase type II, one of the enzymes involved in phosphatidylinositol signaling pathways. This enzyme removes the phosphate group at position 4 of the inositol ring from inositol 3, 4-bisphosphate. There is limited data to suggest that the human type II enzyme is subject to alternative splicing, as has been established for the type I enzyme.

## Immunogen information

### Gene ID:

8821

### Uniprot

O15327

### Synonyms:

INPP4B

## Antibody Information

### Recommended dilutions:

WB 1:500 - 1:2000

### Source:

Rabbit

### Isotype:

IgG

### Purification:

Affinity purification

### Immunogen:

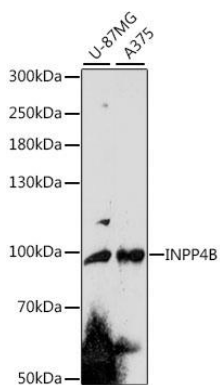
Recombinant fusion protein containing a sequence corresponding to amino acids 380-600 of human INPP4B (NP\_003857.2).

### Storage:

Store at -20°C. Avoid freeze / thaw cycles. Buffer: PBS with 0.02% sodium azide, 50% glycerol, pH7.3.

## Product Images

---



Western blot analysis of extracts of various cell lines, using INPP4B antibody (CAB16461) at 1:1000 dilution. Secondary antibody: HRP Goat Anti-Rabbit IgG (H+L) (CABS014) at 1:10000 dilution. Lysates/proteins: 25ug per lane. Blocking buffer: 3% nonfat dry milk in TBST. Detection: ECL Enhanced Kit (CABM00021). Exposure time: 150s.