

# IKKε Rabbit Polyclonal Antibody



CAB16470

## Product Information

### Size:

20uL, 50uL, 100uL, 200uL

### Observed MW:

110kDa

### Calculated MW:

70kDa/80kDa

### Applications:

WB IHC IP

### Reactivity:

Human, Mouse

## Protein Background

IKBKE is a noncanonical I-kappa-B (see MIM 164008) kinase (IKK) that is essential for regulating antiviral signaling pathways. IKBKE has also been identified as a breast cancer (MIM 114480) oncogene and is amplified and overexpressed in over 30% of breast carcinomas and breast cancer cell lines.

## Immunogen information

### Gene ID:

9641

### Uniprot

Q14164

### Synonyms:

IKBKE; IKK-E; IKK-i; IKKE; IKKI

## Antibody Information

### Recommended dilutions:

WB 1:500 - 1:2000 IHC 1:50  
- 1:200 IP 1:50 - 1:200

### Source:

Rabbit

### Isotype:

IgG

### Purification:

Affinity purification

### Immunogen:

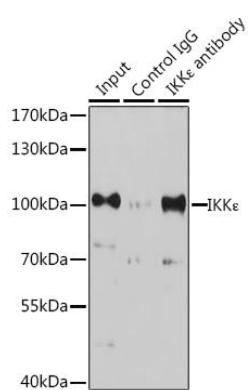
Recombinant fusion protein containing a sequence corresponding to amino acids 460-620 of human IKKε (NP\_001180251.1).

### Storage:

Store at -20°C. Avoid freeze / thaw cycles. Buffer: PBS with 0.02% sodium azide, 50% glycerol, pH7.3.

## Product Images

---



Immunoprecipitation analysis of 200ug extracts of K-562 cells, using 3 ug IKKepsilon antibody (CAB16470). Western blot was performed from the immunoprecipitate using IKKepsilon antibody (CAB16470) at a dilution of 1:1000.