

NUBP2 Rabbit Polyclonal Antibody



CAB16476

Product Information

Size:

20uL, 50uL, 100uL, 200uL

Observed MW:

28kDa

Calculated MW:

28kDa

Applications:

WB

Reactivity:

Human, Mouse, Rat

Protein Background

This gene encodes an adenosine triphosphate (ATP) and metal-binding protein that is required for the assembly of cytosolic iron-sulfur proteins. The encoded protein functions in a heterotetramer with nucleotide-binding protein 1 (NUBP1). Alternative splicing results in multiple transcript variants.

Immunogen information

Gene ID:

10101

Uniprot

Q9Y5Y2

Synonyms:

NUBP2; CFD1; NBP 2; NUBP1

Antibody Information

Recommended dilutions:

WB 1:500 - 1:2000

Source:

Rabbit

Isotype:

IgG

Purification:

Affinity purification

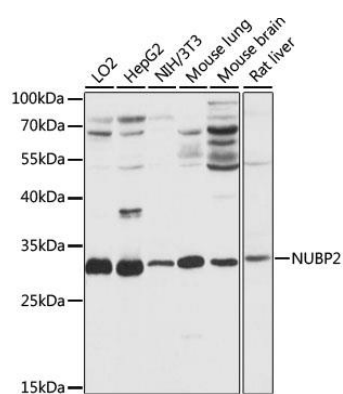
Immunogen:

Recombinant fusion protein containing a sequence corresponding to amino acids 142-271 of human NUBP2 (NP_036357.1).

Storage:

Store at -20°C. Avoid freeze / thaw cycles. Buffer: PBS with 0.02% sodium azide, 50% glycerol, pH7.3.

Product Images



Western blot analysis of extracts of various cell lines, using NUBP2 antibody (CAB16476) at 1:1000 dilution. Secondary antibody: HRP Goat Anti-Rabbit IgG (H+L) (CABS014) at 1:10000 dilution. Lysates/proteins: 25ug per lane. Blocking buffer: 3% nonfat dry milk in TBST. Detection: ECL Basic Kit (CABM00020). Exposure time: 5s.