

# ZNF263 Rabbit Polyclonal Antibody



CAB16477

---

## Product Information

### Size:

20uL, 50uL, 100uL, 200uL

### Observed MW:

77kDa

### Calculated MW:

77kDa

### Applications:

WB IHC

### Reactivity:

Human

## Antibody Information

### Recommended dilutions:

WB 1:500 - 1:2000 IHC 1:50  
- 1:200

### Source:

Rabbit

### Isotype:

IgG

### Purification:

Affinity purification

## Protein Background

### Immunogen information

#### Gene ID:

10127

#### Uniprot

O14978

#### Synonyms:

ZNF263; FPM315; ZKSCAN12; ZSCAN44

#### Immunogen:

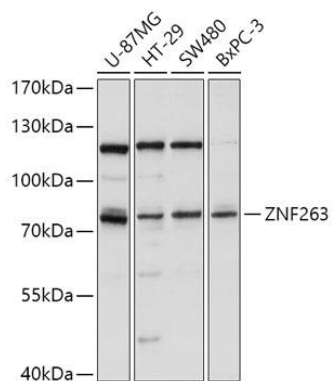
Recombinant fusion protein containing a sequence corresponding to amino acids 120-240 of human ZNF263 (NP\_005732.2).

#### Storage:

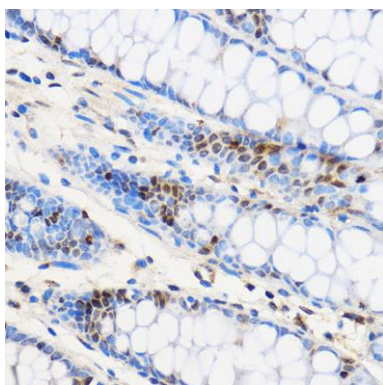
Store at -20°C. Avoid freeze / thaw cycles. Buffer: PBS with 0.02% sodium azide, 50% glycerol, pH7.3.

## Product Images

---



Western blot analysis of extracts of various cell lines, using ZNF263 antibody (CAB16477) at 1:1000 dilution. Secondary antibody: HRP Goat Anti-Rabbit IgG (H+L) (CABS014) at 1:10000 dilution. Lysates/proteins: 25ug per lane. Blocking buffer: 3% nonfat dry milk in TBST. Detection: ECL Basic Kit (CABM00020). Exposure time: 30s.



Immunohistochemistry of paraffin-embedded Human colon using ZNF263 Rabbit pAb (CAB16477) at dilution of 1:100 (40x lens).