

EFS Rabbit Polyclonal Antibody



CAB16479

Product Information

Size:

20uL, 50uL, 100uL, 200uL

Observed MW:

75kDa

Calculated MW:

40kDa/48kDa/58kDa

Applications:

WB

Reactivity:

Mouse

Antibody Information

Recommended dilutions:

WB 1:500 - 1:2000

Source:

Rabbit

Isotype:

IgG

Purification:

Affinity purification

Protein Background

The longest protein isoform encoded by this gene contains an SH3 domain, which is known to be important in intracellular signal transduction. The protein encoded by a similar gene in mice was shown to bind to SH3 domains of protein-tyrosine kinases. The function of this gene is unknown. Three alternatively spliced variants encoding different isoforms have been described for this gene.

Immunogen information

Gene ID:

10278

Uniprot

O43281

Synonyms:

EFS; CAS3; CASS3; EFS1; EFS2; HEFS; SIN

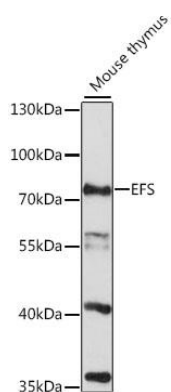
Immunogen:

Recombinant fusion protein containing a sequence corresponding to amino acids 60-190 of human EFS (NP_115835.1).

Storage:

Store at -20°C. Avoid freeze / thaw cycles. Buffer: PBS with 0.02% sodium azide, 50% glycerol, pH7.3.

Product Images



Western blot analysis of extracts of mouse thymus, using EFS antibody (CAB16479) at 1:1000 dilution. Secondary antibody: HRP Goat Anti-Rabbit IgG (H+L) (CABS014) at 1:10000 dilution. Lysates/proteins: 25ug per lane. Blocking buffer: 3% nonfat dry milk in TBST. Detection: ECL Basic Kit (CABM00020). Exposure time: 90s.