

KLF2 Rabbit Polyclonal Antibody



CAB16480

Product Information

Size:

20uL, 50uL, 100uL, 200uL

Observed MW:

37KDa

Calculated MW:

37kDa

Applications:

WB IHC IF

Reactivity:

Human, Mouse, Rat

Antibody Information

Recommended dilutions:

WB 1:500 - 1:2000 IHC 1:50
- 1:200 IF 1:50 - 1:200

Source:

Rabbit

Isotype:

IgG

Purification:

Affinity purification

Protein Background

This gene encodes a protein that belongs to the Kruppel family of transcription factors. The encoded zinc finger protein is expressed early in mammalian development and is found in many different cell types. The protein acts to bind the CACCC box found in the promoter of target genes to activate their transcription. It plays a role in many processes during development and disease including adipogenesis, embryonic erythropoiesis, epithelial integrity, inflammation and t-cell viability.

Immunogen information

Gene ID:

10365

Uniprot

Q9Y5W3

Synonyms:

KLF2; LKLF

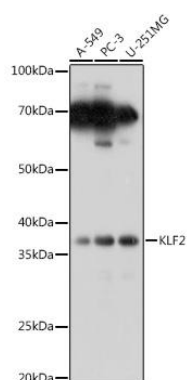
Immunogen:

A synthetic peptide corresponding to a sequence within amino acids 50-150 of human KLF2 (NP_057354.1).

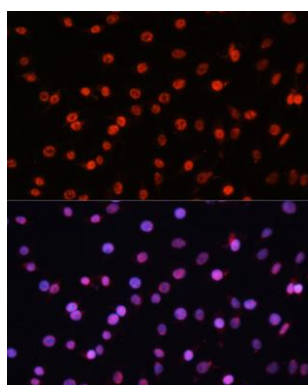
Storage:

Store at -20°C. Avoid freeze / thaw cycles. Buffer: PBS with 0.02% sodium azide, 50% glycerol, pH7.3.

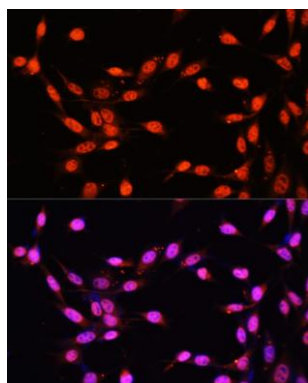
Product Images



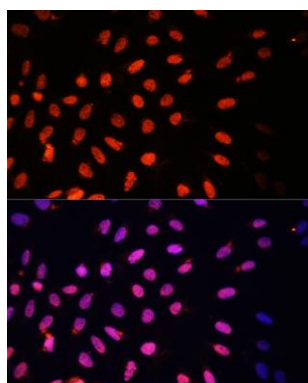
Western blot analysis of extracts of various cell lines, using KLF2 Rabbit pAb (CAB16480) at 1:1000 dilution. Secondary antibody: HRP Goat Anti-Rabbit IgG (H+L) (CABS014) at 1:10000 dilution. Lysates/proteins: 25ug per lane. Blocking buffer: 3% nonfat dry milk in TBST. Detection: ECL Basic Kit (CABM00020). Exposure time: 30s.



Immunofluorescence analysis of C6 cells using KLF2 antibody (CAB16480) at dilution of 1:100. Blue: DAPI for nuclear staining.



Immunofluorescence analysis of NIH/3T3 cells using KLF2 antibody (CAB16480) at dilution of 1:100. Blue: DAPI for nuclear staining.



Immunofluorescence analysis of U2OS cells using KLF2 antibody (CAB16480) at dilution of 1:100. Blue: DAPI for nuclear staining.