

# Heparanase 1 Rabbit Polyclonal Antibody



CAB16488

## Product Information

### Size:

20uL, 50uL, 100uL, 200uL

### Observed MW:

50kDa/65kDa

### Calculated MW:

42kDa/53kDa/54kDa/61kDa

### Applications:

WB IHC IF

### Reactivity:

Human, Mouse, Rat

## Antibody Information

### Recommended dilutions:

WB 1:500 - 1:2000 IHC 1:50  
- 1:200 IF 1:50 - 1:200

### Source:

Rabbit

### Isotype:

IgG

### Purification:

Affinity purification

## Protein Background

Heparan sulfate proteoglycans are major components of the basement membrane and extracellular matrix. The protein encoded by this gene is an enzyme that cleaves heparan sulfate proteoglycans to permit cell movement through remodeling of the extracellular matrix. In addition, this cleavage can release bioactive molecules from the extracellular matrix. Several transcript variants encoding different isoforms have been found for this gene.

## Immunogen information

### Gene ID:

10855

### Uniprot

Q9Y251

### Synonyms:

HPSE; HPA; HPA1; HPR1; HPSE1; HSE1; heparanase

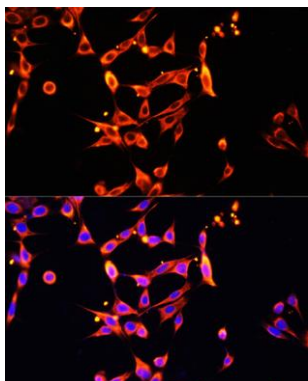
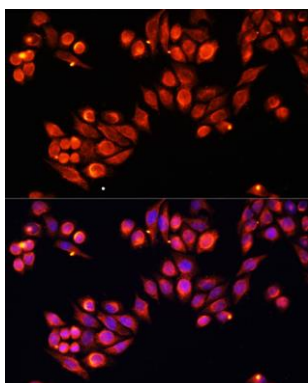
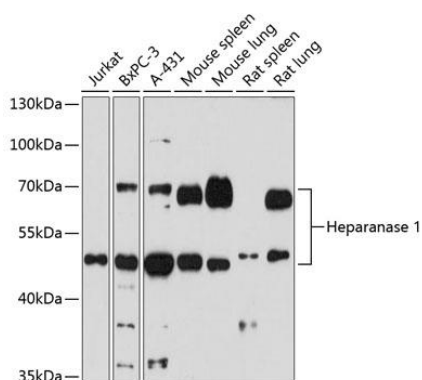
### Immunogen:

Recombinant protein of human Heparanase 1

### Storage:

Store at -20°C. Avoid freeze / thaw cycles. Buffer: PBS with 0.02% sodium azide, 50% glycerol, pH7.3.

## Product Images



Western blot analysis of extracts of various cells, using Heparanase 1 antibody (CAB16488) at 1:1000 dilution. Secondary antibody: HRP Goat Anti-Rabbit IgG (H+L) (CABS014) at 1:10000 dilution. Lysates/proteins: 25ug per lane. Blocking buffer: 3% nonfat dry milk in TBST. Detection: ECL Basic Kit (CABM00020). Exposure time: 30s.

Immunofluorescence analysis of HeLa cells using Heparanase 1 antibody (CAB16488) at dilution of 1:100. Blue: DAPI for nuclear staining.

Immunofluorescence analysis of NIH/3T3 cells using Heparanase 1 antibody (CAB16488) at dilution of 1:100. Blue: DAPI for nuclear staining.