

KATNA1 Rabbit Polyclonal Antibody



CAB16491

Product Information

Size:

20uL, 50uL, 100uL, 200uL

Observed MW:

Calculated MW:

35kDa/55kDa

Applications:

WB IHC

Reactivity:

Human, Mouse, Rat

Antibody Information

Recommended dilutions:

WB 1:1000 - 1:2000 IHC
1:50 - 1:200

Source:

Rabbit

Isotype:

IgG

Purification:

Affinity purification

Protein Background

Microtubules, polymers of alpha and beta tubulin subunits, form the mitotic spindle of a dividing cell and help to organize membranous organelles during interphase. Katanin is a heterodimer that consists of a 60 kDa ATPase (p60 subunit A 1) and an 80 kDa accessory protein (p80 subunit B 1). The p60 subunit acts to sever and disassemble microtubules, while the p80 subunit targets the enzyme to the centrosome. This gene encodes the p80 subunit. This protein is a member of the AAA family of ATPases. Multiple alternatively spliced variants, encoding the same protein, have been identified.

Immunogen information

Gene ID:

11104

Uniprot

O75449

Synonyms:

KATNA1

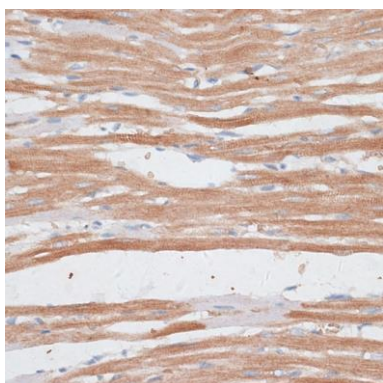
Immunogen:

Recombinant fusion protein containing a sequence corresponding to amino acids 1-167 of human KATNA1 (NP_001191005.1).

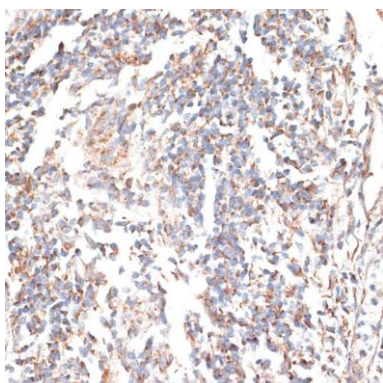
Storage:

Store at -20°C. Avoid freeze / thaw cycles. Buffer: PBS with 0.02% sodium azide, 50% glycerol, pH7.3.

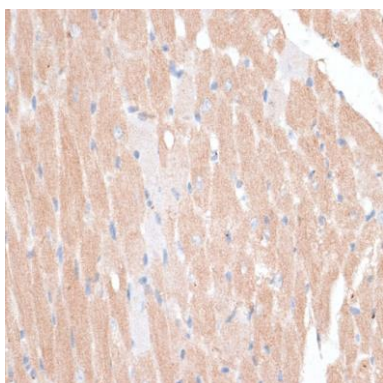
Product Images



Immunohistochemistry of paraffin-embedded rat heart using KATNA1 antibody (CAB16491) at dilution of 1:100 (40x lens).



Immunohistochemistry of paraffin-embedded human tonsil using KATNA1 antibody (CAB16491) at dilution of 1:100 (40x lens).



Immunohistochemistry of paraffin-embedded mouse heart using KATNA1 antibody (CAB16491) at dilution of 1:100 (40x lens).