

BAZ1A Rabbit Polyclonal Antibody



CAB16495

Product Information

Size:

20uL, 50uL, 100uL, 200uL

Observed MW:

Refer to figures

Calculated MW:

175kDa/178kDa

Applications:

WB IF

Reactivity:

Human

Protein Background

The BAZ1A gene encodes the accessory subunit of the ATP-dependent chromatin assembly factor (ACF), a member of the ISWI ('imitation switch') family of chromatin remodeling complexes.

Immunogen information

Gene ID:

11177

Uniprot

Q9NRL2

Synonyms:

BAZ1A; ACF1; WALp1; WCRF180; hACF1

Antibody Information

Recommended dilutions:

WB 1:500 - 1:2000 IF 1:50 - 1:200

Source:

Rabbit

Isotype:

IgG

Purification:

Affinity purification

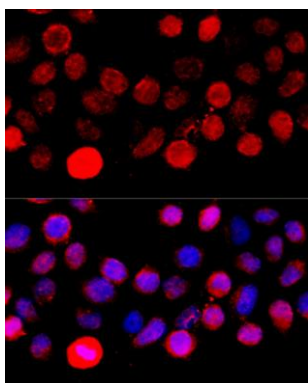
Immunogen:

Recombinant fusion protein containing a sequence corresponding to amino acids 1347-1556 of human BAZ1A (NP_038476.2).

Storage:

Store at -20°C. Avoid freeze / thaw cycles. Buffer: PBS with 0.02% sodium azide, 50% glycerol, pH7.3.

Product Images



Immunofluorescence analysis of HeLa cells using BAZ1A antibody (CAB16495) at dilution of 1:100 (40x lens). Blue: DAPI for nuclear staining.