

HEBP2 Rabbit Polyclonal Antibody



CAB16504

Product Information

Size:

20uL, 50uL, 100uL, 200uL

Observed MW:

25kDa

Calculated MW:

20kDa/22kDa

Applications:

WB IHC IF

Reactivity:

Human, Mouse, Rat

Protein Background

The protein encoded by this gene is found predominately in the cytoplasm, where it plays a role in the collapse of mitochondrial membrane potential (MMP) prior to necrotic cell death. The encoded protein enhances outer and inner mitochondrial membrane permeabilization, especially under conditions of oxidative stress.

Immunogen information

Gene ID:

23593

Uniprot

Q9Y5Z4

Synonyms:

HEBP2; C6ORF34B; C6orf34; PP23; SOUL

Antibody Information

Recommended dilutions:

WB 1:500 - 1:2000 IHC 1:50
- 1:200 IF 1:50 - 1:200

Source:

Rabbit

Isotype:

IgG

Purification:

Affinity purification

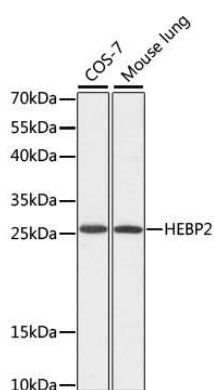
Immunogen:

Recombinant fusion protein containing a sequence corresponding to amino acids 1-205 of human HEBP2 (NP_055135.1).

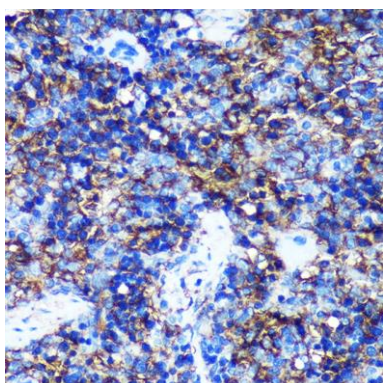
Storage:

Store at -20°C. Avoid freeze / thaw cycles. Buffer: PBS with 0.02% sodium azide, 50% glycerol, pH7.3.

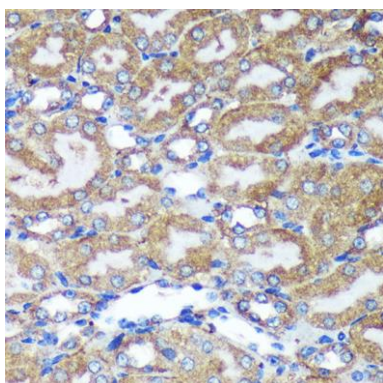
Product Images



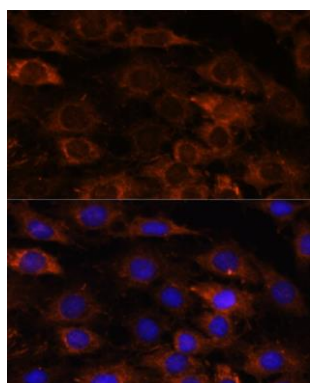
Western blot analysis of extracts of various cell lines, using HEBP2 antibody (CAB16504) at 1:1000 dilution. Secondary antibody: HRP Goat Anti-Rabbit IgG (H+L) (CABS014) at 1:10000 dilution. Lysates/proteins: 25ug per lane. Blocking buffer: 3% nonfat dry milk in TBST. Detection: ECL Basic Kit (CABM00020). Exposure time: 30s.



Immunohistochemistry of paraffin-embedded Rat spleen using HEBP2 Rabbit pAb (CAB16504) at dilution of 1:100 (40x lens).



Immunohistochemistry of paraffin-embedded Mouse kidney using HEBP2 Rabbit pAb (CAB16504) at dilution of 1:100 (40x lens).



Immunofluorescence analysis of C6 cells using HEBP2 antibody (CAB16504) at dilution of 1:100. Blue: DAPI for nuclear staining.