

# NGEF Rabbit Polyclonal Antibody



CAB16507

## Product Information

### Size:

20uL, 50uL, 100uL, 200uL

### Observed MW:

82kDa

### Calculated MW:

26kDa/71kDa/82kDa

### Applications:

WB IHC IF

### Reactivity:

Human, Mouse, Rat

## Antibody Information

### Recommended dilutions:

WB 1:500 - 1:2000 IHC 1:50  
- 1:100 IF 1:50 - 1:100

### Source:

Rabbit

### Isotype:

IgG

### Purification:

Affinity purification

## Protein Background

### Immunogen information

#### Gene ID:

25791

#### Uniprot

Q8N5V2

#### Synonyms:

NGEF; ARHGEF27; EPHEXIN; ephexin-1

#### Immunogen:

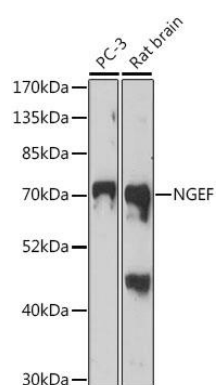
Recombinant fusion protein containing a sequence corresponding to amino acids 429-710 of human NGEF (NP\_062824.2).

#### Storage:

Store at -20°C. Avoid freeze / thaw cycles. Buffer: PBS with 0.02% sodium azide, 50% glycerol, pH7.3.

## Product Images

---



Western blot analysis of extracts of various cell lines, using NGEF antibody (CAB16507) at 1:1000 dilution. Secondary antibody: HRP Goat Anti-Rabbit IgG (H+L) (CABS014) at 1:10000 dilution. Lysates/proteins: 25ug per lane. Blocking buffer: 3% nonfat dry milk in TBST. Detection: ECL Basic Kit (CABM00020). Exposure time: 3min.