

RAB26 Rabbit Polyclonal Antibody



CAB16509

Product Information

Size:

20uL, 50uL, 100uL, 200uL

Observed MW:

26KDa

Calculated MW:

21kDa/27kDa

Applications:

WB

Reactivity:

Human, Mouse, Rat

Protein Background

Members of the RAB protein family, including RAB26, are important regulators of vesicular fusion and trafficking. The RAB family of small G proteins regulates intercellular vesicle trafficking, including exocytosis, endocytosis, and recycling.

Immunogen information

Gene ID:

25837

Uniprot

Q9ULW5

Synonyms:

RAB26; V46133

Antibody Information

Recommended dilutions:

WB 1:500 - 1:2000

Source:

Rabbit

Isotype:

IgG

Purification:

Affinity purification

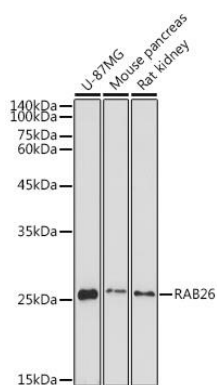
Immunogen:

Recombinant fusion protein containing a sequence corresponding to amino acids 1-60 of human RAB26 (NP_055168.2).

Storage:

Store at -20°C. Avoid freeze / thaw cycles. Buffer: PBS with 0.02% sodium azide, 50% glycerol, pH7.3.

Product Images



Western blot analysis of extracts of various cell lines, using RAB26 antibody (CAB16509) at 1:1000 dilution. Secondary antibody: HRP Goat Anti-Rabbit IgG (H+L) (CABS014) at 1:10000 dilution. Lysates/proteins: 25ug per lane. Blocking buffer: 3% nonfat dry milk in TBST. Detection: ECL Basic Kit (CABM00020). Exposure time: 90s.