

DCAF12 Rabbit Polyclonal Antibody



CAB16510

Product Information

Size:

20uL, 50uL, 100uL, 200uL

Observed MW:

47kDa

Calculated MW:

50kDa

Applications:

WB

Reactivity:

Human, Rat

Protein Background

This gene encodes a WD repeat-containing protein that interacts with the COP9 signalosome, a macromolecular complex that interacts with cullin-RING E3 ligases and regulates their activity by hydrolyzing cullin-Nedd8 conjugates.

Immunogen information

Gene ID:

25853

Uniprot

Q5T6F0

Synonyms:

DCAF12; CT102; KIAA1892; TCC52; WDR40A

Antibody Information

Recommended dilutions:

WB 1:500 - 1:2000

Source:

Rabbit

Isotype:

IgG

Purification:

Affinity purification

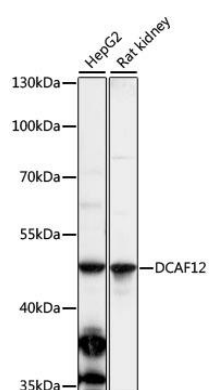
Immunogen:

Recombinant fusion protein containing a sequence corresponding to amino acids 1-85 of human DCAF12 (NP_056212.1).

Storage:

Store at -20°C. Avoid freeze / thaw cycles. Buffer: PBS with 0.02% sodium azide, 50% glycerol, pH7.3.

Product Images



Western blot analysis of extracts of various cell lines, using DCAF12 antibody (CAB16510) at 1:1000 dilution. Secondary antibody: HRP Goat Anti-Rabbit IgG (H+L) (CABS014) at 1:10000 dilution. Lysates/proteins: 25ug per lane. Blocking buffer: 3% nonfat dry milk in TBST. Detection: ECL Basic Kit (CABM00020). Exposure time: 1s.