

COMMD5 Rabbit Polyclonal Antibody



CAB16518

Product Information

Size:

20uL, 50uL, 100uL, 200uL

Observed MW:

25kDa

Calculated MW:

24kDa

Applications:

WB IF

Reactivity:

Human, Mouse, Rat

Antibody Information

Recommended dilutions:

WB 1:500 - 1:2000 IF 1:50 - 1:200

Source:

Rabbit

Isotype:

IgG

Purification:

Affinity purification

Protein Background

Immunogen information

Gene ID:

28991

Uniprot

Q9GZQ3

Synonyms:

COMMD5; HCARG; HT002

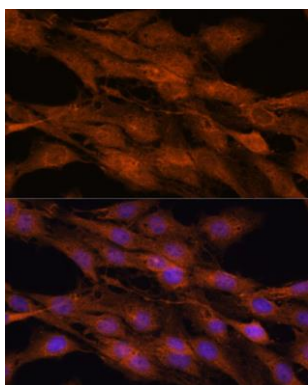
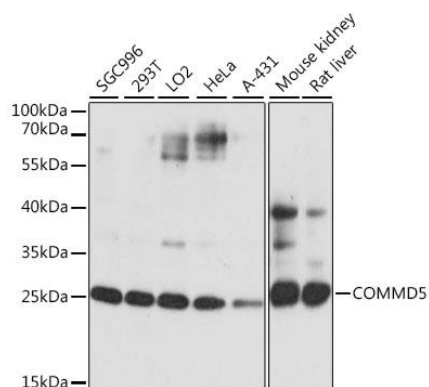
Immunogen:

Recombinant fusion protein containing a sequence corresponding to amino acids 1-224 of human COMMD5 (NP_054785.2).

Storage:

Store at -20°C. Avoid freeze / thaw cycles. Buffer: PBS with 0.02% sodium azide, 50% glycerol, pH7.3.

Product Images



Western blot analysis of extracts of various cell lines, using COMMD5 antibody (CAB16518) at 1:1000 dilution. Secondary antibody: HRP Goat Anti-Rabbit IgG (H+L) (CABS014) at 1:10000 dilution. Lysates/proteins: 25ug per lane. Blocking buffer: 3% nonfat dry milk in TBST. Detection: ECL Basic Kit (CABM00020). Exposure time: 1s.

Immunofluorescence analysis of C6 cells using COMMD5 antibody (CAB16518) at dilution of 1:100. Blue: DAPI for nuclear staining.