

MRPL30 Rabbit Polyclonal Antibody



CAB16529

Product Information

Size:

20uL, 50uL, 100uL, 200uL

Observed MW:

18kDa

Calculated MW:

15kDa/18kDa/21kDa

Applications:

WB IHC

Reactivity:

Human, Rat

Antibody Information

Recommended dilutions:

WB 1:500 - 1:2000 IHC 1:50
- 1:200

Source:

Rabbit

Isotype:

IgG

Purification:

Affinity purification

Protein Background

Mammalian mitochondrial ribosomal proteins are encoded by nuclear genes and help in protein synthesis within the mitochondrion. Mitochondrial ribosomes (mitoribosomes) consist of a small 28S subunit and a large 39S subunit. They have an estimated 75% protein to rRNA composition compared to prokaryotic ribosomes, where this ratio is reversed. Another difference between mammalian mitoribosomes and prokaryotic ribosomes is that the latter contain a 5S rRNA. Among different species, the proteins comprising the mitoribosome differ greatly in sequence, and sometimes in biochemical properties, which prevents easy recognition by sequence homology. This gene encodes a 39S subunit protein. Alternative splicing results in multiple transcript variants. Pseudogenes corresponding to this gene are found on chromosomes 6p and 12p. Read-through transcription also exists between this gene and the neighboring upstream lipoyltransferase 1 (LIPT1) gene.

Immunogen information

Gene ID:

51263

Uniprot

Q8TCC3

Synonyms:

MRPL30; L28MT; L30MT; MRP-L28; MRP-L30; MRPL28; MRPL28M;
RPML28

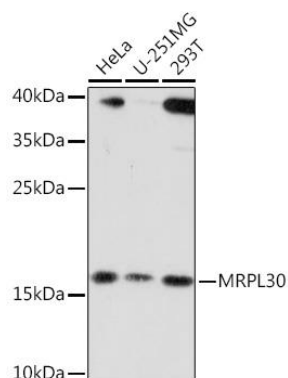
Immunogen:

Recombinant fusion protein containing a sequence corresponding to amino acids 1-161 of human MRPL30 (NP_660213.1).

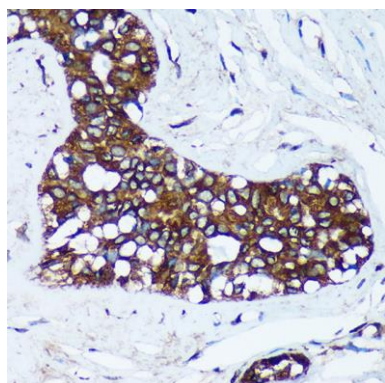
Storage:

Store at -20°C. Avoid freeze / thaw cycles. Buffer: PBS with 0.02% sodium azide, 50% glycerol, pH7.3.

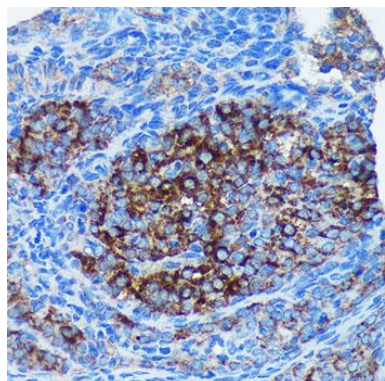
Product Images



Western blot analysis of extracts of various cell lines, using MRPL30 Rabbit pAb (CAB16529) at 1:3000 dilution. Secondary antibody: HRP Goat Anti-Rabbit IgG (H+L) (CABS014) at 1:10000 dilution. Lysates/proteins: 25ug per lane. Blocking buffer: 3% nonfat dry milk in TBST. Detection: ECL Basic Kit (CABM00020). Exposure time: 10s.



Immunohistochemistry of paraffin-embedded Human breast cancer using MRPL30 Rabbit pAb (CAB16529) at dilution of 1:100 (40x lens).



Immunohistochemistry of paraffin-embedded Rat ovary using MRPL30 Rabbit pAb (CAB16529) at dilution of 1:100 (40x lens).