

CD46 Rabbit Polyclonal Antibody



CAB1653

Product Information

Size:

20uL, 50uL, 100uL, 200uL

Observed MW:

50-70kDa

Calculated MW:

36kDa/39kDa/40kDa/41kDa/
42kDa/43kDa/44kDa

Applications:

WB IHC

Reactivity:

Human, Mouse, Rat

Antibody Information

Recommended dilutions:

WB 1:500 - 1:2000 IHC 1:50
- 1:200

Source:

Rabbit

Isotype:

IgG

Purification:

Affinity purification

Protein Background

The protein encoded by this gene is a type I membrane protein and is a regulatory part of the complement system. The encoded protein has cofactor activity for inactivation of complement components C3b and C4b by serum factor I, which protects the host cell from damage by complement. In addition, the encoded protein can act as a receptor for the Edmonston strain of measles virus, human herpesvirus-6, and type IV pili of pathogenic Neisseria. Finally, the protein encoded by this gene may be involved in the fusion of the spermatozoa with the oocyte during fertilization. Mutations at this locus have been associated with susceptibility to hemolytic uremic syndrome. Alternatively spliced transcript variants encoding different isoforms have been described.

Immunogen information

Gene ID:

4179

Uniprot

P15529

Synonyms:

AHUS2; MCP; MIC10; TLX; TRA2.10; CD46

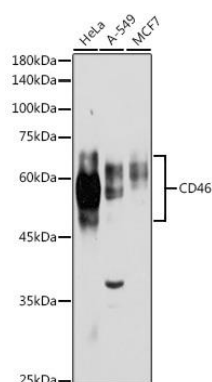
Immunogen:

Recombinant fusion protein containing a sequence corresponding to amino acids 40-320 of human CD46 (NP_722548.1).

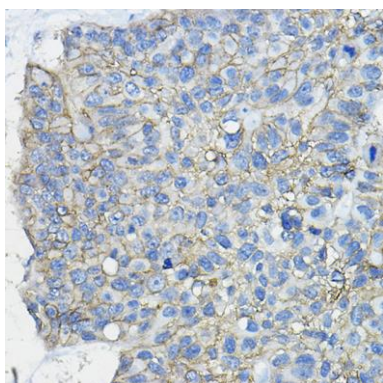
Storage:

Store at -20°C. Avoid freeze / thaw cycles. Buffer: PBS with 0.02% sodium azide, 50% glycerol, pH7.3.

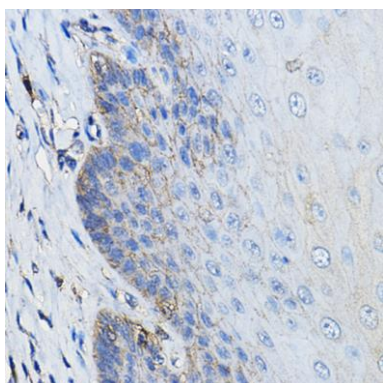
Product Images



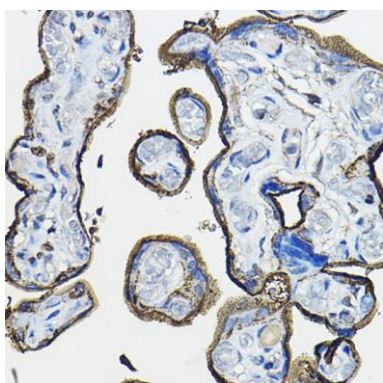
Western blot analysis of extracts of various cell lines, using CD46 antibody (CAB1653) at 1:1000 dilution. Secondary antibody: HRP Goat Anti-Rabbit IgG (H+L) (CABS014) at 1:10000 dilution. Lysates/proteins: 25ug per lane. Blocking buffer: 3% nonfat dry milk in TBST. Detection: ECL Basic Kit (CABM00020). Exposure time: 30s.



Immunohistochemistry of paraffin-embedded human lung cancer using CD46 Rabbit pAb (CAB1653) at dilution of 1:100 (40x lens).



Immunohistochemistry of paraffin-embedded human esophagus using CD46 Rabbit pAb (CAB1653) at dilution of 1:100 (40x lens).



Immunohistochemistry of paraffin-embedded human placenta using CD46 Rabbit pAb (CAB1653) at dilution of 1:100 (40x lens).