

PCF11 Rabbit Polyclonal Antibody



CAB16533

Product Information

Size:

20uL, 50uL, 100uL, 200uL

Observed MW:

180kDa

Calculated MW:

173kDa

Applications:

WB

Reactivity:

Human, Mouse

Protein Background

The protein encoded by this gene binds to CLP1 to form pre-mRNA cleavage factor IIm. The encoded protein is necessary for efficient Pol II transcription termination and may be involved in degradation of the 3' product of polyA site cleavage.

Immunogen information

Gene ID:

51585

Uniprot

O94913

Synonyms:

PCF11

Antibody Information

Recommended dilutions:

WB 1:500 - 1:2000

Source:

Rabbit

Isotype:

IgG

Purification:

Affinity purification

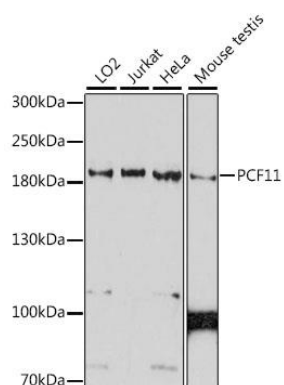
Immunogen:

Recombinant fusion protein containing a sequence corresponding to amino acids 1256-1555 of human PCF11 (NP_056969.2).

Storage:

Store at -20°C. Avoid freeze / thaw cycles. Buffer: PBS with 0.02% sodium azide, 50% glycerol, pH7.3.

Product Images



Western blot analysis of extracts of various cell lines, using PCF11 antibody (CAB16533) at 1:1000 dilution. Secondary antibody: HRP Goat Anti-Rabbit IgG (H+L) (CABS014) at 1:10000 dilution. Lysates/proteins: 25ug per lane. Blocking buffer: 3% nonfat dry milk in TBST. Detection: ECL Basic Kit (CABM00020). Exposure time: 90s.