

TREM1 Rabbit Polyclonal Antibody



CAB16535

Product Information

Size:

20uL, 50uL, 100uL, 200uL

Observed MW:

26kDa

Calculated MW:

17kDa/25kDa/26kDa

Applications:

WB

Reactivity:

Mouse, Rat

Protein Background

This gene encodes a receptor belonging to the Ig superfamily that is expressed on myeloid cells. This protein amplifies neutrophil and monocyte-mediated inflammatory responses triggered by bacterial and fungal infections by stimulating release of pro-inflammatory chemokines and cytokines, as well as increased surface expression of cell activation markers. Alternatively spliced transcript variants encoding different isoforms have been noted for this gene.

Immunogen information

Gene ID:

54210

Uniprot

Q9NP99

Synonyms:

TREM1; CD354; TREM-1

Antibody Information

Recommended dilutions:

WB 1:500 - 1:2000

Source:

Rabbit

Isotype:

IgG

Purification:

Affinity purification

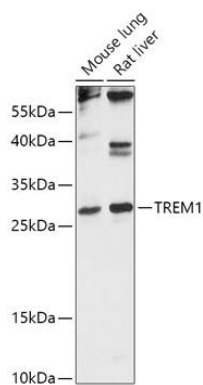
Immunogen:

Recombinant fusion protein containing a sequence corresponding to amino acids 1-234 of human TREM1 (NP_061113.1).

Storage:

Store at -20°C. Avoid freeze / thaw cycles. Buffer: PBS with 0.02% sodium azide, 50% glycerol, pH7.3.

Product Images



Western blot analysis of extracts of various cell lines, using TREM1 antibody (CAB16535) at 1:500 dilution. Secondary antibody: HRP Goat Anti-Rabbit IgG (H+L) (CABS014) at 1:10000 dilution. Lysates/proteins: 25ug per lane. Blocking buffer: 3% nonfat dry milk in TBST. Detection: ECL Basic Kit (CABM00020). Exposure time: 5s.