

CRTAC1 Rabbit Polyclonal Antibody



CAB16541

Product Information

Size:

20uL, 50uL, 100uL, 200uL

Observed MW:

71kDa

Calculated MW:

68kDa/70kDa/71kDa

Applications:

WB

Reactivity:

Mouse

Antibody Information

Recommended dilutions:

WB 1:500 - 1:2000

Source:

Rabbit

Isotype:

IgG

Purification:

Affinity purification

Protein Background

This gene encodes a glycosylated extracellular matrix protein that is found in the interterritorial matrix of articular deep zone cartilage. This protein is used as a marker to distinguish chondrocytes from osteoblasts and mesenchymal stem cells in culture. The presence of FG-GAP motifs and an RGD integrin-binding motif suggests that this protein may be involved in cell-cell or cell-matrix interactions. Copy number alterations in this gene have been observed in neurofibromatosis type 1-associated glomus tumors. Alternative splicing results in multiple transcript variants.

Immunogen information

Gene ID:

55118

Uniprot

Q9NQ79

Synonyms:

CRTAC1; ASPIC; ASPIC1; CEP-68

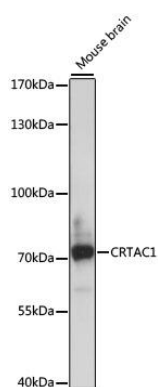
Immunogen:

Recombinant fusion protein containing a sequence corresponding to amino acids 312-661 of human CRTAC1 (NP_060528.3).

Storage:

Store at -20°C. Avoid freeze / thaw cycles. Buffer: PBS with 0.02% sodium azide, 50% glycerol, pH7.3.

Product Images



Western blot analysis of extracts of mouse brain, using CRTAC1 antibody (CAB16541) at 1:1000 dilution. Secondary antibody: HRP Goat Anti-Rabbit IgG (H+L) (CABS014) at 1:10000 dilution. Lysates/proteins: 25ug per lane. Blocking buffer: 3% nonfat dry milk in TBST. Detection: ECL Basic Kit (CABM00020). Exposure time: 5s.