

CHDH Rabbit Polyclonal Antibody



CAB16545

Product Information

Size:

20uL, 50uL, 100uL, 200uL

Observed MW:

65kDa

Calculated MW:

65kDa

Applications:

WB IHC

Reactivity:

Human, Mouse, Rat

Protein Background

The protein encoded by this gene is a choline dehydrogenase that localizes to the mitochondrion. Variations in this gene can affect susceptibility to choline deficiency. A few transcript variants have been found for this gene, but the full-length nature of only one has been characterized to date.

Immunogen information

Gene ID:

55349

Uniprot

Q8NE62

Synonyms:

CHDH

Antibody Information

Recommended dilutions:

WB 1:500 - 1:2000 IHC 1:50
- 1:200

Source:

Rabbit

Isotype:

IgG

Purification:

Affinity purification

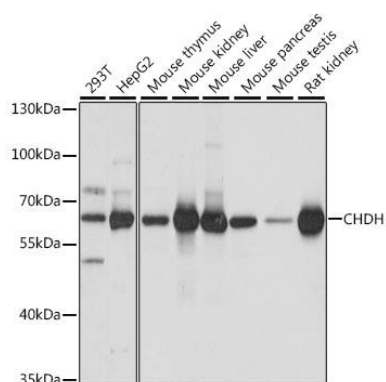
Immunogen:

Recombinant fusion protein containing a sequence corresponding to amino acids 245-594 of human CHDH (NP_060867.2).

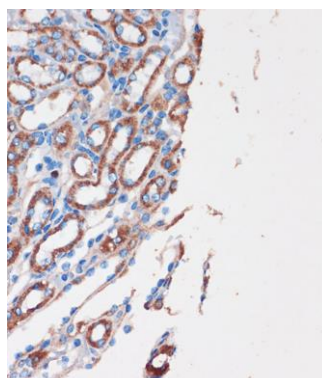
Storage:

Store at -20°C. Avoid freeze / thaw cycles. Buffer: PBS with 0.02% sodium azide, 50% glycerol, pH7.3.

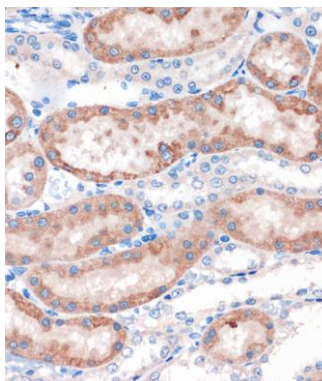
Product Images



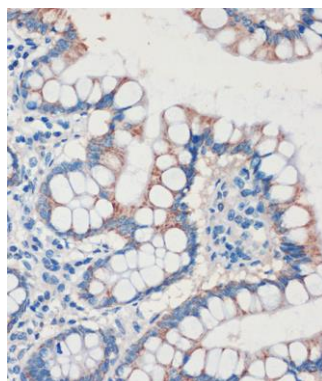
Western blot analysis of extracts of various cell lines, using CHDH antibody (CAB16545) at 1:1000 dilution. Secondary antibody: HRP Goat Anti-Rabbit IgG (H+L) (CABS014) at 1:10000 dilution. Lysates/proteins: 25ug per lane. Blocking buffer: 3% nonfat dry milk in TBST. Detection: ECL Basic Kit (CABM00020). Exposure time: 3s.



Immunohistochemistry of paraffin-embedded Mouse kidney using CHDH Rabbit pAb (CAB16545) at dilution of 1:100 (40x lens).



Immunohistochemistry of paraffin-embedded Rat kidney using CHDH Rabbit pAb (CAB16545) at dilution of 1:100 (40x lens).



Immunohistochemistry of paraffin-embedded Human colon using CHDH Rabbit pAb (CAB16545) at dilution of 1:100 (40x lens).