

KIF21A Rabbit Polyclonal Antibody



CAB16548

Product Information

Size:

20uL, 50uL, 100uL, 200uL

Observed MW:

187kDa

Calculated MW:

180kDa/182kDa/185kDa/187kDa

Applications:

WB IF

Reactivity:

Human, Mouse,

Protein Background

This gene encodes a member of the KIF4 subfamily of kinesin-like motor proteins. The encoded protein is characterized by an N-terminal motor domain a coiled-coil stalk domain and a C-terminal WD-40 repeat domain. This protein may be involved in microtubule dependent transport. Mutations in this gene are the cause of congenital fibrosis of extraocular muscles-1. Alternate splicing results in multiple transcript variants.

Immunogen information

Gene ID:

55605

Uniprot

Q7Z4S6

Synonyms:

KIF21A; CFEOM1; FEOM1; FEOM3A

Antibody Information

Recommended dilutions:

WB 1:500 - 1:2000 IF 1:50 - 1:200

Source:

Rabbit

Isotype:

IgG

Purification:

Affinity purification

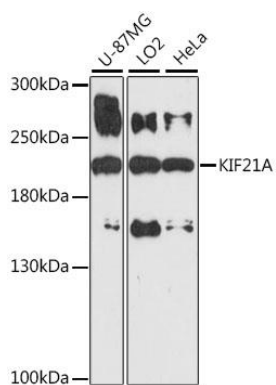
Immunogen:

Recombinant fusion protein containing a sequence corresponding to amino acids 1070-1270 of human KIF21A (NP_001166935.1).

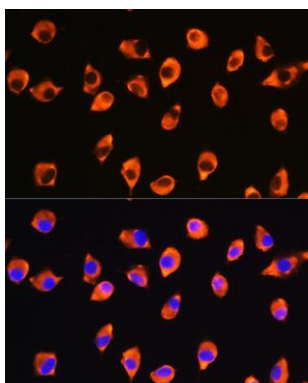
Storage:

Store at -20°C. Avoid freeze / thaw cycles. Buffer: PBS with 0.02% sodium azide, 50% glycerol, pH7.3.

Product Images



Western blot analysis of extracts of various cell lines, using KIF21A antibody (CAB16548) at 1:1000 dilution. Secondary antibody: HRP Goat Anti-Rabbit IgG (H+L) (CABS014) at 1:10000 dilution. Lysates/proteins: 25ug per lane. Blocking buffer: 3% nonfat dry milk in TBST. Detection: ECL Basic Kit (CABM00020). Exposure time: 3min.



Immunofluorescence analysis of L929 cells using KIF21A Rabbit pAb (CAB16548) at dilution of 1:100. Blue: DAPI for nuclear staining.