

CPXM1 Rabbit Polyclonal Antibody



CAB16552

Product Information

Size:

20uL, 50uL, 100uL, 200uL

Observed MW:

81kDa

Calculated MW:

81kDa

Applications:

WB

Reactivity:

Human, Mouse

Protein Background

This gene likely encodes a member of the carboxypeptidase family of proteins. Cloning of a comparable locus in mouse indicates that the encoded protein contains a discoidin domain and a carboxypeptidase domain, but the protein appears to lack residues necessary for carboxypeptidase activity.

Immunogen information

Gene ID:

56265

Uniprot

Q96SM3

Synonyms:

CPXM1; CPX1; CPXM

Antibody Information

Recommended dilutions:

WB 1:500 - 1:2000

Source:

Rabbit

Isotype:

IgG

Purification:

Affinity purification

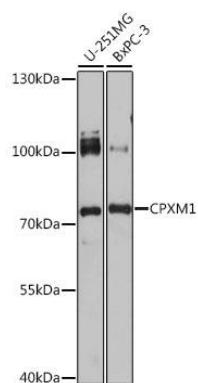
Immunogen:

Recombinant protein of human CPXM1

Storage:

Store at -20°C. Avoid freeze / thaw cycles. Buffer: PBS with 0.02% sodium azide, 50% glycerol, pH7.3.

Product Images



Western blot analysis of extracts of various cell lines, using CPXM1 antibody (CAB16552) at 1:1000 dilution. Secondary antibody: HRP Goat Anti-Rabbit IgG (H+L) (CABS014) at 1:10000 dilution. Lysates/proteins: 25ug per lane. Blocking buffer: 3% nonfat dry milk in TBST. Detection: ECL Basic Kit (CABM00020). Exposure time: 200s.