

FSTL5 Rabbit Polyclonal Antibody



CAB16553

Product Information

Size:

20uL, 50uL, 100uL, 200uL

Observed MW:

93-100kDa

Calculated MW:

94kDa/95kDa

Applications:

WB IF

Reactivity:

Human, Mouse, Rat

Antibody Information

Recommended dilutions:

WB 1:500 - 1:2000 IF 1:50 - 1:200

Source:

Rabbit

Isotype:

IgG

Purification:

Affinity purification

Protein Background

Immunogen information

Gene ID:

56884

Uniprot

Q8N475

Synonyms:

FSTL5

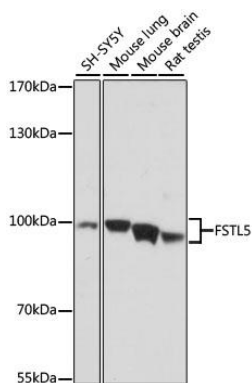
Immunogen:

Recombinant fusion protein containing a sequence corresponding to amino acids 21-250 of human FSTL5 (NP_064501.2).

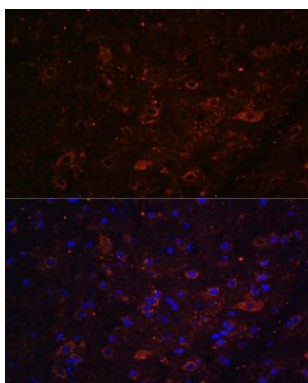
Storage:

Store at -20°C. Avoid freeze / thaw cycles. Buffer: PBS with 0.02% sodium azide, 50% glycerol, pH7.3.

Product Images



Western blot analysis of extracts of various cell lines, using FSTL5 antibody (CAB16553) at 1:1000 dilution. Secondary antibody: HRP Goat Anti-Rabbit IgG (H+L) (CABS014) at 1:10000 dilution. Lysates/proteins: 25ug per lane. Blocking buffer: 3% nonfat dry milk in TBST. Detection: ECL Basic Kit (CABM00020). Exposure time: 5s.



Immunofluorescence analysis of mouse brain using FSTL5 antibody (CAB16553) at dilution of 1:100. Blue: DAPI for nuclear staining.