

PMEPA1 Rabbit Polyclonal Antibody



CAB16555

Product Information

Size:

20uL, 50uL, 100uL, 200uL

Observed MW:

Refer to figures

Calculated MW:

26kDa/27kDa/31kDa

Applications:

WB IHC IF

Reactivity:

Human, Mouse, Rat

Protein Background

This gene encodes a transmembrane protein that contains a Smad interacting motif (SIM). Expression of this gene is induced by androgens and transforming growth factor beta, and the encoded protein suppresses the androgen receptor and transforming growth factor beta signaling pathways through interactions with Smad proteins. Overexpression of this gene may play a role in multiple types of cancer. Alternatively spliced transcript variants encoding multiple isoforms have been observed for this gene.

Immunogen information

Gene ID:

56937

Uniprot

Q969W9

Synonyms:

PMEPA1; STAG1; TMEPAI

Antibody Information

Recommended dilutions:

WB 1:500 - 1:2000 IHC 1:50
- 1:200 IF 1:50 - 1:200

Source:

Rabbit

Isotype:

IgG

Purification:

Affinity purification

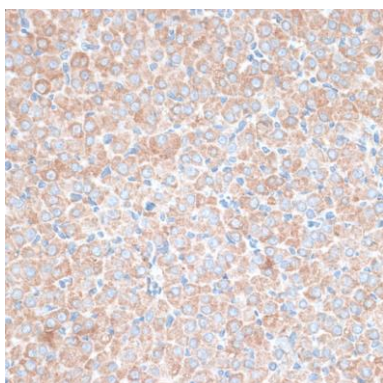
Immunogen:

Recombinant fusion protein containing a sequence corresponding to amino acids 173-252 of human PMEPA1 (NP_954638.1).

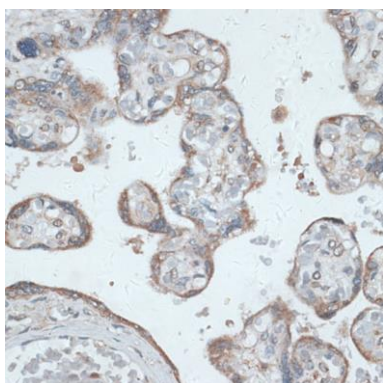
Storage:

Store at -20°C. Avoid freeze / thaw cycles. Buffer: PBS with 0.02% sodium azide, 50% glycerol, pH7.3.

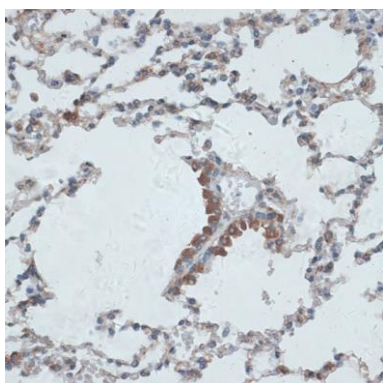
Product Images



Immunohistochemistry of paraffin-embedded rat ovary using PMEPA1 antibody (CAB16555) at dilution of 1:100 (40x lens).



Immunohistochemistry of paraffin-embedded human placenta using PMEPA1 antibody (CAB16555) at dilution of 1:100 (40x lens).



Immunohistochemistry of paraffin-embedded mouse lung using PMEPA1 antibody (CAB16555) at dilution of 1:100 (40x lens).