

# CYSLTR2 Rabbit Polyclonal Antibody



**CAB16556**

---

## Product Information

### Size:

20uL, 50uL, 100uL, 200uL

### Observed MW:

40kDa

### Calculated MW:

39kDa

### Applications:

WB

### Reactivity:

Mouse

## Antibody Information

### Recommended dilutions:

WB 1:500 - 1:2000

### Source:

Rabbit

### Isotype:

IgG

### Purification:

Affinity purification

## Protein Background

The cysteinyl leukotrienes LTC<sub>4</sub>, LTD<sub>4</sub>, and LTE<sub>4</sub> are important mediators of human bronchial asthma. Pharmacologic studies have determined that cysteinyl leukotrienes activate at least 2 receptors, the protein encoded by this gene and CYSLTR1. This encoded receptor is a member of the superfamily of G protein-coupled receptors. It seems to play a major role in endocrine and cardiovascular systems.

## Immunogen information

### Gene ID:

57105

### Uniprot

Q9NS75

### Synonyms:

CYSLTR2; CYSLT2; CYSLT2R; GPCR21; HG57; HPN321; KPG\_011; PSEC0146; hGPCR21

### Immunogen:

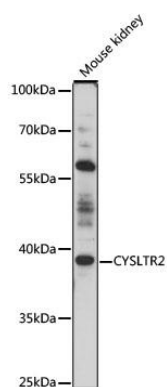
A synthetic peptide corresponding to a sequence within amino acids 200 to the C-terminus of human CYSLTR2 (NP\_001295394.1).

### Storage:

Store at -20°C. Avoid freeze / thaw cycles. Buffer: PBS with 0.02% sodium azide, 50% glycerol, pH7.3.

## Product Images

---



Western blot analysis of extracts of mouse kidney, using CYSLTR2 antibody (CAB16556) at 1:1000 dilution. Secondary antibody: HRP Goat Anti-Rabbit IgG (H+L) (CABS014) at 1:10000 dilution. Lysates/proteins: 25ug per lane. Blocking buffer: 3% nonfat dry milk in TBST. Detection: ECL Basic Kit (CABM00020). Exposure time: 10s.