

SLAMF7 Rabbit Polyclonal Antibody



CAB16565

Product Information

Size:

20uL, 50uL, 100uL, 200uL

Observed MW:

35-70KDa

Calculated MW:

17kDa/21kDa/22kDa/25kDa/
32kDa/37kDa

Applications:

WB IHC

Reactivity:

Human, Mouse, Rat

Antibody Information

Recommended dilutions:

WB 1:500 - 1:2000 IHC 1:50
- 1:200

Source:

Rabbit

Isotype:

IgG

Purification:

Affinity purification

Protein Background

Immunogen information

Gene ID:

57823

Uniprot

Q9NQ25

Synonyms:

SLAMF7; 19A; CD319; CRACC; CS1

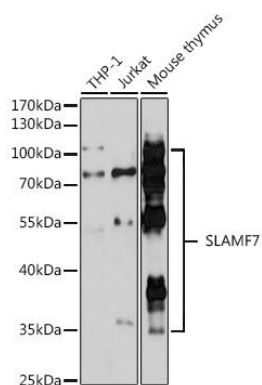
Immunogen:

Recombinant fusion protein containing a sequence corresponding to amino acids 23-226 of human SLAMF7 (NP_067004.3).

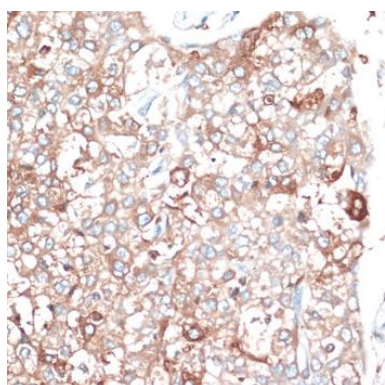
Storage:

Store at -20°C. Avoid freeze / thaw cycles. Buffer: PBS with 0.02% sodium azide, 50% glycerol, pH7.3.

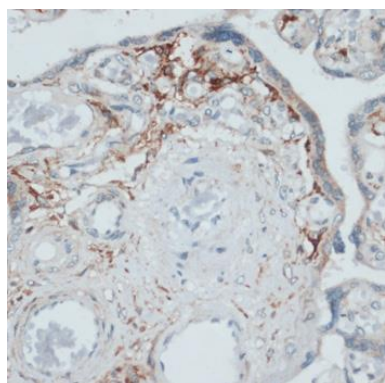
Product Images



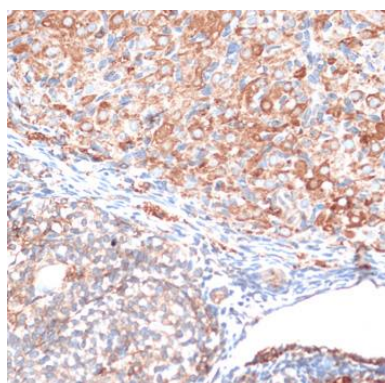
Western blot analysis of extracts of various cell lines, using SLAMF7 antibody (CAB16565) at 1:3000 dilution. Secondary antibody: HRP Goat Anti-Rabbit IgG (H+L) (CABS014) at 1:10000 dilution. Lysates/proteins: 25ug per lane. Blocking buffer: 3% nonfat dry milk in TBST. Detection: ECL Basic Kit (CABM00020). Exposure time: 90s.



Immunohistochemistry of paraffin-embedded human liver cancer using SLAMF7 antibody (CAB16565) at dilution of 1:100 (40x lens).



Immunohistochemistry of paraffin-embedded human placenta using SLAMF7 antibody (CAB16565) at dilution of 1:100 (40x lens).



Immunohistochemistry of paraffin-embedded rat ovary using SLAMF7 antibody (CAB16565) at dilution of 1:100 (40x lens).