

ARHGAP22 Rabbit Polyclonal Antibody



CAB16566

Product Information

Size:

20uL, 50uL, 100uL, 200uL

Observed MW:

77kDa

Calculated MW:

52kDa/66kDa/76kDa/77kDa/
78kDa

Applications:

WB

Reactivity:

Mouse, Rat

Antibody Information

Recommended dilutions:

WB 1:500 - 1:2000

Source:

Rabbit

Isotype:

IgG

Purification:

Affinity purification

Protein Background

This gene encodes a member of the GTPase activating protein family which activates a GTPase belonging to the RAS superfamily of small GTP-binding proteins. The encoded protein is insulin-responsive, is dependent on the kinase Akt and requires the Akt-dependent 14-3-3 binding protein which binds sequentially to two serine residues. The result of these interactions is regulation of cell motility. Multiple transcript variants encoding different isoforms have been found for this gene.

Immunogen information

Gene ID:

58504

Uniprot

Q7Z5H3

Synonyms:

ARHGAP22; RhoGAP2; RhoGap22

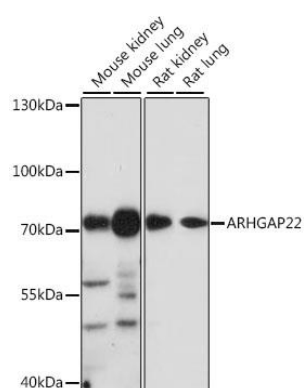
Immunogen:

Recombinant fusion protein containing a sequence corresponding to amino acids 510-650 of human ARHGAP22 (NP_001242953.1).

Storage:

Store at -20°C. Avoid freeze / thaw cycles. Buffer: PBS with 0.02% sodium azide, 50% glycerol, pH7.3.

Product Images



Western blot analysis of extracts of various cell lines, using ARHGAP22 antibody (CAB16566) at 1:1000 dilution. Secondary antibody: HRP Goat Anti-Rabbit IgG (H+L) (CABS014) at 1:10000 dilution. Lysates/proteins: 25ug per lane. Blocking buffer: 3% nonfat dry milk in TBST. Detection: ECL Enhanced Kit (CABM00021). Exposure time: 30s.