

COLGALT1 Rabbit Polyclonal Antibody



CAB16571

Product Information

Size:

20uL, 50uL, 100uL, 200uL

Observed MW:

70kDa

Calculated MW:

71kDa

Applications:

WB

Reactivity:

Human, Mouse, Rat

Protein Background

The protein encoded by this gene is one of two enzymes that transfers galactose moieties to hydroxylysine residues of collagen and mannose binding lectin. This gene is constitutively expressed and encodes a soluble protein that localizes to the endoplasmic reticulum.

Immunogen information

Gene ID:

79709

Uniprot

Q8NBJ5

Synonyms:

COLGALT1; GLT25D1

Antibody Information

Recommended dilutions:

WB 1:500 - 1:2000

Source:

Rabbit

Isotype:

IgG

Purification:

Affinity purification

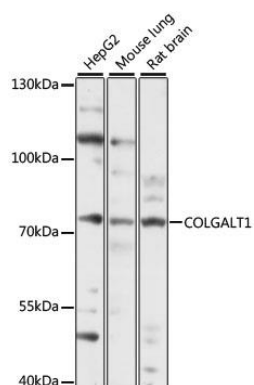
Immunogen:

Recombinant fusion protein containing a sequence corresponding to amino acids 30-230 of human COLGALT1 (NP_078932.2).

Storage:

Store at -20°C. Avoid freeze / thaw cycles. Buffer: PBS with 0.02% sodium azide, 50% glycerol, pH7.3.

Product Images



Western blot analysis of extracts of various cell lines, using COLGALT1 antibody (CAB16571) at 1:1000 dilution. Secondary antibody: HRP Goat Anti-Rabbit IgG (H+L) (CABS014) at 1:10000 dilution. Lysates/proteins: 25ug per lane. Blocking buffer: 3% nonfat dry milk in TBST. Detection: ECL Basic Kit (CABM00020). Exposure time: 10s.